

Product datasheet for **TA357683**

MYPN Rabbit Polyclonal Antibody

Product data:

Product Type:	Primary Antibodies
Applications:	WB
Reactivity:	Human
Host:	Rabbit
Clonality:	Polyclonal
Specificity:	Expected reactivity: Cow, Dog, Guinea Pig, Horse, Human, Mouse, Pig, Rabbit, Rat, Zebrafish Homology: Cow: 100%; Dog: 100%; Guinea Pig: 93%; Horse: 93%; Human: 100%; Mouse: 100%; Pig: 100%; Rabbit: 100%; Rat: 100%; Zebrafish: 92%
Formulation:	Liquid. Purified antibody supplied in 1x PBS buffer with 0.09% (w/v) sodium azide and 2% sucrose.
Concentration:	lot specific
Purification:	Affinity Purified
Conjugation:	Unconjugated
Storage:	For short term use, store at 2-8°C up to 1 week. For long term storage, store at -20°C in small aliquots to prevent freeze-thaw cycles.
Stability:	Shelf life: one year from despatch.
Predicted Protein Size:	145kDa
Gene Name:	myopalladin
Database Link:	NP_115967 Entrez Gene 84665 Human Q86TC9
Background:	MYPN is a component of the sarcomere that tethers nebulin in skeletal muscle and nebulin in cardiac muscle to alpha-actinin at the Z lines.
Synonyms:	MYOP; myopalladin

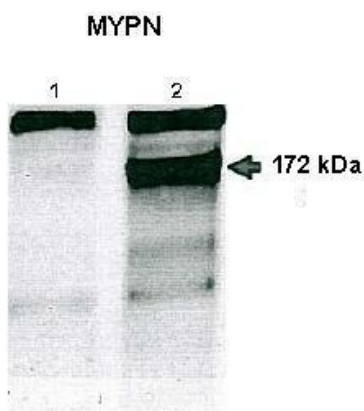


[View online »](#)

Product images:



WB Suggested Anti-MYPN Antibody
Titration: 1.0 ug/ml
Positive Control: HepG2 Whole Cell



Lanes:
1: 50ug untransfected CHO lysate, 2: 50ug
hMYPN-GFP transfected CHO lysate
Primary Antibody Dilution:
1:500
Secondary Antibody:
Anti-rabbit-RPF
Secondary Antibody Dilution:
1:10,000
Gene Name:
MYPN
Submitted by:
Agathe Korniat INSERM/UPMC UMRS_956

See Immunoblot 2 Data and customer Feedback for more Information