

Product datasheet for **TA357682**

Hint2 Rabbit Polyclonal Antibody

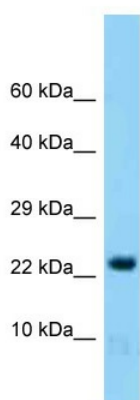
Product data:

Product Type:	Primary Antibodies
Applications:	WB
Reactivity:	Mouse
Host:	Rabbit
Clonality:	Polyclonal
Specificity:	Expected reactivity: Cow, Dog, Guinea Pig, Horse, Human, Mouse, Rabbit, Rat Homology: Cow: 100%; Dog: 100%; Guinea Pig: 100%; Horse: 93%; Human: 100%; Mouse: 93%; Rabbit: 100%; Rat: 93%
Formulation:	Liquid. Purified antibody supplied in 1x PBS buffer with 0.09% (w/v) sodium azide and 2% sucrose. <i>Note that this product is shipped as lyophilized powder to China customers.</i>
Concentration:	lot specific
Purification:	Affinity Purified
Conjugation:	Unconjugated
Storage:	For short term use, store at 2-8°C up to 1 week. For long term storage, store at -20°C in small aliquots to prevent freeze-thaw cycles.
Stability:	Shelf life: one year from despatch.
Predicted Protein Size:	17kDa
Gene Name:	histidine triad nucleotide binding protein 2
Database Link:	NP_081147 Entrez Gene 68917 Mouse Q9D0S9
Background:	The function of this protein is unknown.
Synonyms:	HINT-2; HINT-3; HIT-17; HIT-17kDa



[View online »](#)

Product images:



WB Suggested Anti-Hint2 Antibody
Titration: 1.0 ug/ml
Positive Control: Mouse Brain