

Product datasheet for TA357680

DPY30 Rabbit Polyclonal Antibody

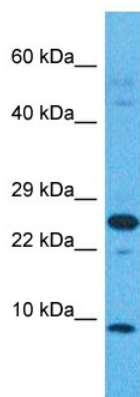
Product data:

Product Type:	Primary Antibodies
Applications:	WB
Reactivity:	Human
Host:	Rabbit
Clonality:	Polyclonal
Immunogen:	The immunogen is a synthetic peptide directed towards the N-terminal region of Human DPY30
Specificity:	Expected reactivity: Cow, Dog, Guinea Pig, Horse, Human, Mouse, Rabbit, Rat, Yeast Homology: Cow: 100%; Dog: 100%; Guinea Pig: 100%; Horse: 100%; Human: 100%; Mouse: 100%; Rabbit: 100%; Rat: 100%; Yeast: 79%
Formulation:	Liquid. Purified antibody supplied in 1x PBS buffer with 0.09% (w/v) sodium azide and 2% sucrose. <i>Note that this product is shipped as lyophilized powder to China customers.</i>
Concentration:	lot specific
Purification:	Affinity purified
Conjugation:	Unconjugated
Storage:	For short term use, store at 2-8°C up to 1 week. For long term storage, store at -20°C in small aliquots to prevent freeze-thaw cycles.
Stability:	Shelf life: one year from despatch.
Predicted Protein Size:	10 kDa
Gene Name:	dpy-30, histone methyltransferase complex regulatory subunit
Database Link:	XP_006712182.1 Entrez Gene 84661 Human Q9C005
Background:	DPY30 is a component of a Set1-like multiprotein histone methyltransferase complex.
Synonyms:	HDPY-30; Saf19



[View online »](#)

Product images:



Host: Rabbit
Target Name: DPY30
Sample Tissue: Stomach Tumor Lysate
Antibody Dilution: 1.0 μ g/ml

WB Suggested Anti-DPY30 antibody Titration: 1
ug/mL
Sample Type: Human Stomach Tumor