

Product datasheet for **TA357679**

ARHGAP9 Rabbit Polyclonal Antibody

Product data:

Product Type:	Primary Antibodies
Applications:	WB
Reactivity:	Human
Host:	Rabbit
Clonality:	Polyclonal
Immunogen:	The immunogen is a synthetic peptide directed towards the C terminal region of human RHG09
Specificity:	Expected reactivity: Human Homology: Cow: 93%; Dog: 100%; Guinea Pig: 100%; Horse: 100%; Human: 100%; Mouse: 86%; Rabbit: 100%; Rat: 100%
Formulation:	Liquid. Purified antibody supplied in 1x PBS buffer with 0.09% (w/v) sodium azide and 2% sucrose. <i>Note that this product is shipped as lyophilized powder to China customers.</i>
Concentration:	lot specific
Purification:	Affinity purified
Conjugation:	Unconjugated
Storage:	For short term use, store at 2-8°C up to 1 week. For long term storage, store at -20°C in small aliquots to prevent freeze-thaw cycles.
Stability:	Shelf life: one year from despatch.
Predicted Protein Size:	80 kDa
Gene Name:	Rho GTPase activating protein 9
Database Link:	NP_115885 Entrez Gene 64333 Human Q9BRR9-2



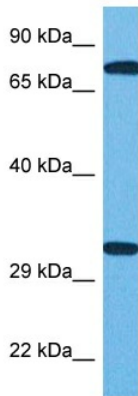
[View online »](#)

Background:

This gene encodes a member of the Rho-GAP family of GTPase activating proteins. The protein has substantial GAP activity towards several Rho-family GTPases in vitro, converting them to an inactive GDP-bound state. It is implicated in regulating adhesion of hematopoietic cells to the extracellular matrix. Multiple transcript variants encoding different isoforms have been found for this gene.

Synonyms:

10C; FLJ16525; MGC1295; RGL1

Product images:

Host: Rabbit
Target Name: RHG09
Sample Type: Lymph Node Tumor Lysate
Antibody Dilution: 1.0µg/ml

Host: Rabbit
Target Name: RHG09
Sample Tissue: Human Lymph Node Tumor lysates
Antibody Dilution: 1ug/ml