

Product datasheet for **TA357671**

Angiotensin Converting Enzyme 1 (ACE) Rabbit Polyclonal Antibody

Product data:

Product Type:	Primary Antibodies
Reactivity:	Human
Host:	Rabbit
Clonality:	Polyclonal
Immunogen:	The immunogen is a synthetic peptide directed towards the N terminal region of human ACE
Specificity:	Expected reactivity: Cow, Dog, Guinea Pig, Horse, Human, Mouse, Rabbit, Rat Homology: Cow: 93%; Dog: 79%; Guinea Pig: 93%; Horse: 86%; Human: 100%; Mouse: 79%; Rabbit: 86%; Rat: 93%
Formulation:	Liquid. Purified antibody supplied in 1x PBS buffer with 0.09% (w/v) sodium azide and 2% sucrose. <i>Note that this product is shipped as lyophilized powder to China customers.</i>
Concentration:	lot specific
Purification:	Affinity purified
Conjugation:	Unconjugated
Storage:	For short term use, store at 2-8°C up to 1 week. For long term storage, store at -20°C in small aliquots to prevent freeze-thaw cycles.
Stability:	Shelf life: one year from despatch.
Predicted Protein Size:	125 kDa
Gene Name:	angiotensin I converting enzyme
Database Link:	NP_000780.1 Entrez Gene 1636 Human P12821-2



[View online »](#)

Background:

This gene encodes an enzyme involved in catalyzing the conversion of angiotensin I into a physiologically active peptide angiotensin II. Angiotensin II is a potent vasopressor and aldosterone-stimulating peptide that controls blood pressure and fluid-electrolyte balance. This enzyme plays a key role in the renin-angiotensin system. Many studies have associated the presence or absence of a 287 bp Alu repeat element in this gene with the levels of circulating enzyme or cardiovascular pathophysiology. Multiple alternatively spliced transcript variants encoding different isoforms have been identified, and two most abundant spliced variants encode the somatic form and the testicular form, respectively, that are equally active.

Synonyms:

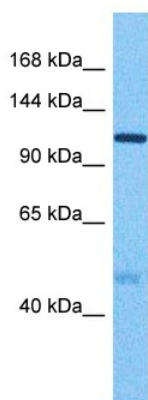
ACE1; carboxypeptidase; CD143; DCP; DCP1; MGC26566; MVCD3

Protein Families:

Druggable Genome, ES Cell Differentiation/IPS, Protease, Secreted Protein, Transmembrane

Protein Pathways:

Hypertrophic cardiomyopathy (HCM), Renin-angiotensin system

Product images:

Host: Rabbit
Target Name: ACE
Sample Type: Thymus Tumor Lysate
Antibody Dilution: 1.0µg/ml

Host: Rabbit
Target Name: ACE
Sample Tissue: Human Thymus Tumor lysates
Antibody Dilution: 1ug/ml