

## Product datasheet for **TA357661**

### GC1q R (C1QBP) Rabbit Polyclonal Antibody

#### Product data:

Product Type:	Primary Antibodies
Applications:	WB
Reactivity:	Human
Host:	Rabbit
Clonality:	Polyclonal
Immunogen:	The immunogen is a synthetic peptide directed towards the C-terminal region of Human C1QBP
Specificity:	<b>Expected reactivity:</b> Cow, Dog, Guinea Pig, Horse, Human, Mouse, Rabbit, Rat <b>Homology:</b> Cow: 83%; Dog: 86%; Guinea Pig: 79%; Horse: 86%; Human: 100%; Mouse: 86%; Rabbit: 100%; Rat: 86%
Formulation:	Liquid. Purified antibody supplied in 1x PBS buffer with 0.09% (w/v) sodium azide and 2% sucrose. <i>Note that this product is shipped as lyophilized powder to China customers.</i>
Concentration:	lot specific
Purification:	Affinity purified
Conjugation:	Unconjugated
Storage:	For short term use, store at 2-8°C up to 1 week. For long term storage, store at -20°C in small aliquots to prevent freeze-thaw cycles.
Stability:	Shelf life: one year from despatch.
Predicted Protein Size:	31 kDa
Gene Name:	complement component 1, q subcomponent binding protein
Database Link:	<a href="#">NP_001203.1</a> <a href="#">Entrez Gene 708 Human</a> <a href="#">Q07021</a>



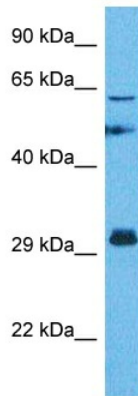
[View online »](#)

**Background:**

The human complement subcomponent C1q associates with C1r and C1s in order to yield the first component of the serum complement system. The protein encoded by this gene is known to bind to the globular heads of C1q molecules and inhibit C1 activation. This protein has also been identified as the p32 subunit of pre-mRNA splicing factor SF2, as well as a hyaluronic acid-binding protein.

**Synonyms:**

gC1Q-R; GC1QBP; gC1qR; HABP1; p32; p33; SF2p32

**Product images:**

Host: Rabbit  
Target Name: C1QBP  
Sample Tissue: Stomach Tumor Lysate  
Antibody Dilution: 1.0 $\mu$ g/ml

WB Suggested Anti-C1QBP antibody Titration: 1  
ug/mL  
Sample Type: Human Stomach Tumor