

Product datasheet for **TA357658**

Proteinase Activated Receptor 3 (F2RL2) Rabbit Polyclonal Antibody

Product data:

Product Type:	Primary Antibodies
Applications:	WB
Reactivity:	Human
Host:	Rabbit
Clonality:	Polyclonal
Immunogen:	The immunogen is a synthetic peptide directed towards the N terminal region of human PAR3
Specificity:	Expected reactivity: Human Homology: Cow: 79%; Horse: 79%; Human: 100%; Pig: 77%
Formulation:	Liquid. Purified antibody supplied in 1x PBS buffer with 0.09% (w/v) sodium azide and 2% sucrose. <i>Note that this product is shipped as lyophilized powder to China customers.</i>
Concentration:	lot specific
Purification:	Affinity purified
Conjugation:	Unconjugated
Storage:	For short term use, store at 2-8°C up to 1 week. For long term storage, store at -20°C in small aliquots to prevent freeze-thaw cycles.
Stability:	Shelf life: one year from despatch.
Predicted Protein Size:	41 kDa
Gene Name:	coagulation factor II thrombin receptor like 2
Database Link:	NP_004092 Entrez Gene 2151 Human O00254



[View online »](#)

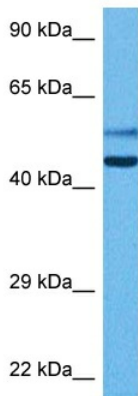
Background: This gene encodes a member of the protease-activated receptor (PAR) family which is a subfamily of the seven transmembrane G protein-coupled cell surface receptor family. The encoded protein acts as a cofactor in the thrombin-mediated cleavage and activation of the protease-activated receptor family member PAR4. The encoded protein plays an essential role in hemostasis and thrombosis. Alternate splicing results in multiple transcript variants that encode different isoforms.

Synonyms: PAR-3; PAR3

Protein Families: Druggable Genome, GPCR, Transmembrane

Protein Pathways: Neuroactive ligand-receptor interaction

Product images:



Host: Rabbit
 Target Name: PAR3
 Sample Type: Ovary Tumor Lysate
 Antibody Dilution: 1.0µg/ml

Host: Rabbit
 Target Name: PAR3
 Sample Tissue: Human Ovary Tumor lysates
 Antibody Dilution: 1 ug/ml