

Product datasheet for **TA357656**

PAR2 (F2RL1) Rabbit Polyclonal Antibody

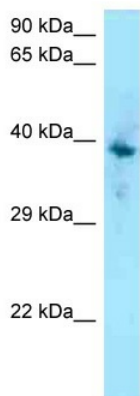
Product data:

Product Type:	Primary Antibodies
Applications:	WB
Reactivity:	Human
Host:	Rabbit
Clonality:	Polyclonal
Specificity:	Expected reactivity: Dog, Guinea Pig, Human, Rat Homology: Dog: 93%; Guinea Pig: 86%; Human: 100%; Rat: 86%
Formulation:	Liquid. Purified antibody supplied in 1x PBS buffer with 0.09% (w/v) sodium azide and 2% sucrose. <i>Note that this product is shipped as lyophilized powder to China customers.</i>
Concentration:	lot specific
Purification:	Affinity Purified
Conjugation:	Unconjugated
Storage:	For short term use, store at 2-8°C up to 1 week. For long term storage, store at -20°C in small aliquots to prevent freeze-thaw cycles.
Stability:	Shelf life: one year from despatch.
Predicted Protein Size:	44kDa
Gene Name:	F2R like trypsin receptor 1
Database Link:	NP_005233 Entrez Gene 2150 Human P55085
Background:	Coagulation factor II (thrombin) receptor-like 1 (F2RL1) is a member of the large family of 7-transmembrane-region receptors that couple to guanosine-nucleotide-binding proteins. F2RL1 is also a member of the protease-activated receptor family. It is activated by trypsin, but not by thrombin. It is activated by proteolytic cleavage of its extracellular amino terminus. The new amino terminus functions as a tethered ligand and activates the receptor. The F2RL1 gene contains two exons and is widely expressed in human tissues. The predicted protein sequence is 83% identical to the mouse receptor sequence.

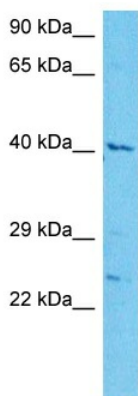


[View online »](#)

Synonyms: GPR11; PAR-2; PAR2
Protein Families: Druggable Genome, GPCR, Transmembrane
Protein Pathways: Neuroactive ligand-receptor interaction

Product images:


WB Suggested Anti-F2RL1 Antibody
 Titration: 1.0 ug/ml
 Positive Control: MCF7 Whole Cell



Host: Rabbit
 Target Name: F2RL1
 Sample Type: Jurkat Cell Lysate
 Antibody Dilution: 1.0µg/ml

Host: Rabbit
 Target Name: F2RL1
 Sample Tissue: Human Jurkat Whole Cell
 Antibody Dilution: 0.5ug/ml