

Product datasheet for **TA357653**

CLN5 Rabbit Polyclonal Antibody

Product data:

Product Type:	Primary Antibodies
Reactivity:	Human
Host:	Rabbit
Clonality:	Polyclonal
Immunogen:	The immunogen is a synthetic peptide directed towards the C terminal region of human CLN5
Specificity:	Expected reactivity: Cow, Dog, Guinea Pig, Horse, Human, Pig, Rabbit, Rat Homology: Cow: 77%; Dog: 79%; Guinea Pig: 79%; Horse: 86%; Human: 100%; Pig: 86%; Rabbit: 86%; Rat: 79%
Formulation:	Liquid. Purified antibody supplied in 1x PBS buffer with 0.09% (w/v) sodium azide and 2% sucrose. <i>Note that this product is shipped as lyophilized powder to China customers.</i>
Concentration:	lot specific
Purification:	Affinity purified
Conjugation:	Unconjugated
Storage:	For short term use, store at 2-8°C up to 1 week. For long term storage, store at -20°C in small aliquots to prevent freeze-thaw cycles.
Stability:	Shelf life: one year from despatch.
Predicted Protein Size:	39 kDa
Gene Name:	ceroid-lipofuscinosis, neuronal 5
Database Link:	NP_006484 Entrez Gene 1203 Human O75503
Background:	This gene is one of eight which have been associated with neuronal ceroid lipofuscinoses (NCL). Also referred to as Batten disease, NCL comprises a class of autosomal recessive, neurodegenerative disorders affecting children. The genes responsible likely encode proteins involved in the degradation of post-translationally modified proteins in lysosomes. The primary defect in NCL disorders is thought to be associated with lysosomal storage function.

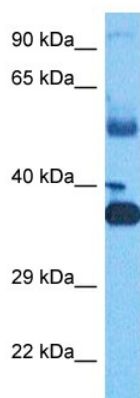


[View online »](#)

Synonyms: FLJ90628; NCL

Protein Pathways: Lysosome

Product images:



Host: Rabbit
Target Name: CLN5
Sample Type: Lung Tumor Lysate
Antibody Dilution: 1.0 μ g/ml

Host: Rabbit
Target Name: CLN5
Sample Tissue: Human Lung Tumor lysates
Antibody Dilution: 1 μ g/ml