

Product datasheet for TA357651

Adenosine Receptor A2a (ADORA2A) Rabbit Polyclonal Antibody

Product data:

Product Type:	Primary Antibodies
Applications:	IHC, WB
Reactivity:	Human
Host:	Rabbit
Clonality:	Polyclonal
Immunogen:	The immunogen is a synthetic peptide directed towards the C terminal region of human ADORA2A
Specificity:	Expected reactivity: Cow, Dog, Guinea Pig, Horse, Human, Mouse, Rabbit, Rat Homology: Cow: 80%; Dog: 100%; Guinea Pig: 93%; Horse: 100%; Human: 100%; Mouse: 93%; Rabbit: 93%; Rat: 93%
Formulation:	Liquid. Purified antibody supplied in 1x PBS buffer with 0.09% (w/v) sodium azide and 2% sucrose. <i>Note that this product is shipped as lyophilized powder to China customers.</i>
Concentration:	lot specific
Purification:	Affinity Purified
Conjugation:	Unconjugated
Storage:	For short term use, store at 2-8°C up to 1 week. For long term storage, store at -20°C in small aliquots to prevent freeze-thaw cycles.
Stability:	Shelf life: one year from despatch.
Predicted Protein Size:	45kDa
Gene Name:	adenosine A2a receptor
Database Link:	NP_000666 Entrez Gene 135 Human P29274
Background:	ADORA2A is one of several receptor subtypes for adenosine. The activity of the protein, a G-protein coupled receptor family member, is mediated by G proteins which activate adenylyl cyclase. ADORA2A is abundant in basal ganglia, vasculature and platelets and it is a major target of caffeine.



[View online »](#)

Synonyms: ADORA2; hA2aR; RDC8

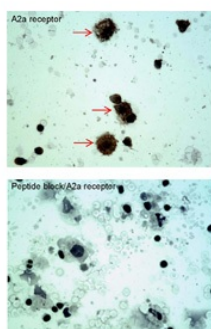
Protein Families: Druggable Genome, GPCR, Transmembrane

Protein Pathways: Calcium signaling pathway, Neuroactive ligand-receptor interaction, Vascular smooth muscle contraction

Product images:



WB Suggested Anti-ADORA2A Antibody Titration:
 0.2-1 ug/ml
 ELISA Titer: 1:312500
 Positive Control: RPMI 8226 cell lysate
 ADORA2A is supported by BioGPS gene expression data to be expressed in RPMI 8226



Sample type -- oral cell carcinoma Dilution -- 5ug/mL