

Product datasheet for **TA357646**

LGI3 Rabbit Polyclonal Antibody

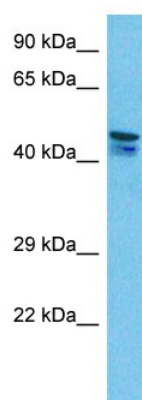
Product data:

Product Type:	Primary Antibodies
Applications:	WB
Reactivity:	Human
Host:	Rabbit
Clonality:	Polyclonal
Immunogen:	The immunogen is a synthetic peptide directed towards the N-terminal region of Human LGI3
Specificity:	Expected reactivity: Dog, Guinea Pig, Horse, Human, Mouse, Rabbit, Rat Homology: Dog: 100%; Guinea Pig: 100%; Horse: 100%; Human: 100%; Mouse: 100%; Rabbit: 100%; Rat: 100%
Formulation:	Liquid. Purified antibody supplied in 1x PBS buffer with 0.09% (w/v) sodium azide and 2% sucrose. <i>Note that this product is shipped as lyophilized powder to China customers.</i>
Concentration:	lot specific
Purification:	Affinity purified
Conjugation:	Unconjugated
Storage:	For short term use, store at 2-8°C up to 1 week. For long term storage, store at -20°C in small aliquots to prevent freeze-thaw cycles.
Stability:	Shelf life: one year from despatch.
Predicted Protein Size:	60 kDa
Gene Name:	leucine-rich repeat LGI family member 3
Database Link:	NP_644807.1 Entrez Gene 203190 Human Q8N145
Background:	LGI3 may participate in the regulation of neuronal exocytosis.
Synonyms:	LGIL4



[View online »](#)

Product images:



Host: Rabbit
Target Name: LGI3
Sample Tissue: Ovary Tumor Lysate
Antibody Dilution: 1.0 μ g/ml

WB Suggested Anti-LGI3 antibody Titration: 1
ug/mL
Sample Type: Human Ovary Tumor