

Product datasheet for **TA357641**

MAGEC1 Rabbit Polyclonal Antibody

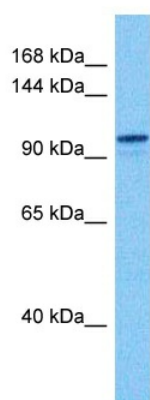
Product data:

Product Type:	Primary Antibodies
Reactivity:	Human
Host:	Rabbit
Clonality:	Polyclonal
Immunogen:	The immunogen is a synthetic peptide directed towards the N terminal region of human MAGEC1
Specificity:	Expected reactivity: Human Homology: Human: 100%
Formulation:	Liquid. Purified antibody supplied in 1x PBS buffer with 0.09% (w/v) sodium azide and 2% sucrose.
Concentration:	lot specific
Purification:	Affinity purified
Conjugation:	Unconjugated
Storage:	For short term use, store at 2-8°C up to 1 week. For long term storage, store at -20°C in small aliquots to prevent freeze-thaw cycles.
Stability:	Shelf life: one year from despatch.
Predicted Protein Size:	125 kDa
Gene Name:	MAGE family member C1
Database Link:	NP_005453 Entrez Gene 9947 Human O60732
Background:	This gene is a member of the melanoma antigen gene (MAGE) family. The proteins of this family are tumor-specific antigens that can be recognized by autologous cytolytic T lymphocytes. This protein contains a large number of unique short repetitive sequences in front of the MAGE-homologous sequence, and therefore is about 800 aa longer than the other MAGE proteins.
Synonyms:	CT7; CT7.1; MAGE-C1; MGC39366



[View online »](#)

Product images:



Host: Rabbit
Target Name: MAGEC1
Sample Type: Lymph Node Tumor Lysate
Antibody Dilution: 1.0 μ g/ml

Host: Rabbit
Target Name: MAGEC1
Sample Tissue: Human Lymph Node Tumor lysates
Antibody Dilution: 1ug/ml