

## Product datasheet for **TA357640**

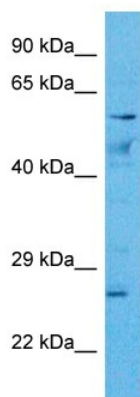
### ENOX2 Rabbit Polyclonal Antibody

#### Product data:

Product Type:	Primary Antibodies
Applications:	WB
Reactivity:	Human
Host:	Rabbit
Clonality:	Polyclonal
Immunogen:	The immunogen is a synthetic peptide directed towards the middle region of Human ENOX2
Specificity:	<b>Expected reactivity:</b> Dog, Guinea Pig, Horse, Human, Mouse, Rabbit, Rat <b>Homology:</b> Dog: 93%; Guinea Pig: 93%; Horse: 93%; Human: 100%; Mouse: 93%; Rabbit: 100%; Rat: 93%
Formulation:	Liquid. Purified antibody supplied in 1x PBS buffer with 0.09% (w/v) sodium azide and 2% sucrose. <i>Note that this product is shipped as lyophilized powder to China customers.</i>
Concentration:	lot specific
Purification:	Affinity purified
Conjugation:	Unconjugated
Storage:	For short term use, store at 2-8°C up to 1 week. For long term storage, store at -20°C in small aliquots to prevent freeze-thaw cycles.
Stability:	Shelf life: one year from despatch.
Predicted Protein Size:	63 kDa
Gene Name:	ecto-NOX disulfide-thiol exchanger 2
Database Link:	<a href="#">Entrez Gene 10495 Human Q16206-2</a>
Background:	This gene is a tumor-specific member of the ECTO-NOX family of genes that encode cell surface NADH oxidases. The encoded protein has two enzymatic activities: catalysis of hydroquinone or NADH oxidation, and protein disulfide interchange. The protein also displays prion-like properties. Alternative splicing results in multiple transcript variants.
Synonyms:	APK1; COVA1; OTTHUMP00000024021; OTTHUMP00000024022; tNOX



[View online »](#)

**Product images:**

Host: Rabbit  
Target Name: ENOX2  
Sample Tissue: Lymph Node Tumor Lysate  
Antibody Dilution: 1.0 $\mu$ g/ml

WB Suggested Anti-ENOX2 antibody Titration: 1  
ug/mL  
Sample Type: Human Lymph Node Tumor