

Product datasheet for **TA357638**

TMEM185A Rabbit Polyclonal Antibody

Product data:

| | |
|-------------------------|---|
| Product Type: | Primary Antibodies |
| Applications: | WB |
| Reactivity: | Human |
| Host: | Rabbit |
| Clonality: | Polyclonal |
| Immunogen: | The immunogen for Anti-TMEM185A antibody is: synthetic peptide directed towards the N-terminal region of Human T185A |
| Specificity: | Expected reactivity: Cow, Dog, Guinea Pig, Horse, Human, Mouse, Rat, Zebrafish Homology: Cow: 100%; Dog: 100%; Guinea Pig: 100%; Horse: 100%; Human: 100%; Mouse: 100%; Rat: 100%; Zebrafish: 100% |
| Formulation: | Liquid. Purified antibody supplied in 1x PBS buffer with 0.09% (w/v) sodium azide and 2% sucrose. |
| Concentration: | lot specific |
| Purification: | Affinity purified |
| Conjugation: | Unconjugated |
| Storage: | For short term use, store at 2-8°C up to 1 week. For long term storage, store at -20°C in small aliquots to prevent freeze-thaw cycles. |
| Stability: | Shelf life: one year from despatch. |
| Predicted Protein Size: | 38 kDa |
| Gene Name: | transmembrane protein 185A |
| Database Link: | NP_115897.1 Entrez Gene 84548 Human Q8NFB2 |



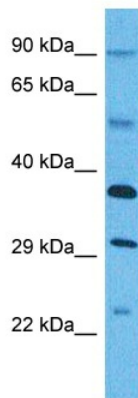
[View online »](#)

Background:

The protein encoded by this gene is predicted to be a transmembrane protein. This gene is best known for localizing to the CpG island of the fragile site FRAXF. The 5' untranslated region of this gene contains a CGG trinucleotide repeat sequence that normally consists of 7-40 tandem CGG repeats but which can expand to greater than 300 repeats. Methylation of the CpG island leads to transcriptional silencing of this gene, but neither the silencing nor an expanded repeat region appear to manifest itself in a clear phenotypic manner. Alternative splicing results in multiple transcript variants. A pseudogene of this gene has been defined on the X chromosome.

Synonyms:

CXorf13; ee3; FAM11A; MGC118844; MGC118845

Product images:


Host: Rabbit

Target Name: T185A

Sample Tissue: Thymus Tumor Lysate

Antibody Dilution: 1.0µg/ml

WB Suggested Anti-T185A antibody Titration: 1 ug/mL

Sample Type: Human Thymus Tumor