

## Product datasheet for **TA357635**

### GPR136 (OPN5) Rabbit Polyclonal Antibody

#### Product data:

Product Type:	Primary Antibodies
Reactivity:	Human
Host:	Rabbit
Clonality:	Polyclonal
Immunogen:	The immunogen is a synthetic peptide directed towards the C terminal region of human OPN5
Specificity:	<b>Expected reactivity:</b> Cow, Dog, Guinea Pig, Horse, Human, Mouse, Pig, Rabbit, Rat <b>Homology:</b> Cow: 93%; Dog: 92%; Guinea Pig: 92%; Horse: 93%; Human: 100%; Mouse: 79%; Pig: 93%; Rabbit: 92%; Rat: 93%
Formulation:	Liquid. Purified antibody supplied in 1x PBS buffer with 0.09% (w/v) sodium azide and 2% sucrose. <i>Note that this product is shipped as lyophilized powder to China customers.</i>
Concentration:	lot specific
Purification:	Affinity purified
Conjugation:	Unconjugated
Storage:	For short term use, store at 2-8°C up to 1 week. For long term storage, store at -20°C in small aliquots to prevent freeze-thaw cycles.
Stability:	Shelf life: one year from despatch.
Predicted Protein Size:	38 kDa
Gene Name:	opsin 5
Database Link:	<a href="#">NP_859528</a> <a href="#">Entrez Gene 221391 Human</a> <a href="#">Q6U736</a>
Background:	Opsins are members of the guanine nucleotide-binding protein (G protein)-coupled receptor superfamily. This opsin gene is expressed in the eye, brain, testes, and spinal cord. This gene belongs to the seven-exon subfamily of mammalian opsin genes that includes peropsin (RRH) and retinal G protein coupled receptor (RGR). Like these other seven-exon opsin genes, this family member may encode a protein with photoisomerase activity. Alternative splicing results in multiple transcript variants.

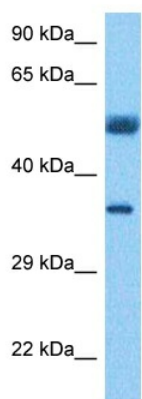


[View online »](#)

Synonyms: dj402H5.1; GPR136; NEUROPSIN; PGR12; TMEM13

Protein Families: Druggable Genome, Transmembrane

### Product images:



Host: Rabbit  
Target Name: OPN5  
Sample Type: Ovary Tumor Lysate  
Antibody Dilution: 1.0 $\mu$ g/ml

Host: Rabbit  
Target Name: OPN5  
Sample Tissue: Human Ovary Tumor lysates  
Antibody Dilution: 1 $\mu$ g/ml