

Product datasheet for **TA357628**

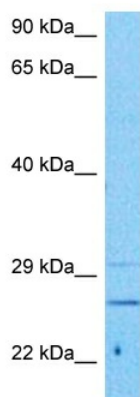
LRAT Rabbit Polyclonal Antibody

Product data:

Product Type:	Primary Antibodies
Reactivity:	Human
Host:	Rabbit
Clonality:	Polyclonal
Immunogen:	The immunogen is a synthetic peptide directed towards the N terminal region of human LRAT
Specificity:	Expected reactivity: Human, Pig Homology: Human: 100%; Pig: 79%
Formulation:	Liquid. Purified antibody supplied in 1x PBS buffer with 0.09% (w/v) sodium azide and 2% sucrose.
Concentration:	lot specific
Purification:	Affinity purified
Conjugation:	Unconjugated
Storage:	For short term use, store at 2-8°C up to 1 week. For long term storage, store at -20°C in small aliquots to prevent freeze-thaw cycles.
Stability:	Shelf life: one year from despatch.
Predicted Protein Size:	25 kDa
Gene Name:	lecithin retinol acyltransferase (phosphatidylcholine--retinol O-acyltransferase)
Database Link:	NP_001288574.1 Entrez Gene 9227 Human O95237
Background:	The protein encoded by this gene localizes to the endoplasmic reticulum, where it catalyzes the esterification of all-trans-retinol into all-trans-retinyl ester. This reaction is an important step in vitamin A metabolism in the visual system. Mutations in this gene have been associated with early-onset severe retinal dystrophy and Leber congenital amaurosis 14. Alternative splicing results in multiple transcript variants.
Synonyms:	MGC33103
Protein Families:	Druggable Genome, Transmembrane
Protein Pathways:	Retinol metabolism



[View online »](#)

Product images:


Host: Rabbit
 Target Name: LRAT
 Sample Type: Stomach Tumor Lysate
 Antibody Dilution: 1.0µg/ml

Host: Rabbit
 Target Name: LRAT
 Sample Tissue: Human Stomach Tumor lysates
 Antibody Dilution: 1ug/ml