

Product datasheet for **TA357627**

LRAT Rabbit Polyclonal Antibody

Product data:

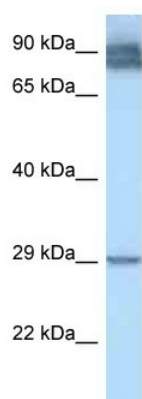
Product Type:	Primary Antibodies
Applications:	WB
Reactivity:	Human
Host:	Rabbit
Clonality:	Polyclonal
Specificity:	Expected reactivity: Cow, Dog, Horse, Human, Mouse, Rabbit, Rat Homology: Cow: 93%; Dog: 86%; Horse: 79%; Human: 100%; Mouse: 79%; Rabbit: 93%; Rat: 79%
Formulation:	Liquid. Purified antibody supplied in 1x PBS buffer with 0.09% (w/v) sodium azide and 2% sucrose. <i>Note that this product is shipped as lyophilized powder to China customers.</i>
Concentration:	lot specific
Purification:	Affinity Purified
Conjugation:	Unconjugated
Storage:	For short term use, store at 2-8°C up to 1 week. For long term storage, store at -20°C in small aliquots to prevent freeze-thaw cycles.
Stability:	Shelf life: one year from despatch.
Predicted Protein Size:	26kDa
Gene Name:	lecithin retinol acyltransferase (phosphatidylcholine--retinol O-acyltransferase)
Database Link:	NP_004735 Entrez Gene 9227 Human O95237
Background:	The protein encoded by this gene is a microsomal enzyme that catalyzes the esterification of all-trans-retinol into all-trans-retinyl ester, an essential reaction for the retinoid cycle in visual system and vitamin A status in liver. Mutations in this gene have been associated with early-onset severe retinal dystrophy.
Synonyms:	MGC33103
Protein Families:	Druggable Genome, Transmembrane



[View online »](#)

Protein Pathways: Retinol metabolism

Product images:



WB Suggested Anti-LRAT Antibody
Titration: 1.0 ug/ml
Positive Control: THP-1 Whole Cell