

Product datasheet for **TA357625**

Opn1mw Rabbit Polyclonal Antibody

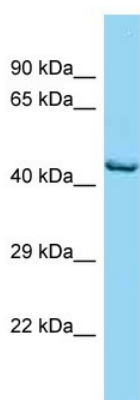
Product data:

Product Type:	Primary Antibodies
Applications:	WB
Reactivity:	Mouse
Host:	Rabbit
Clonality:	Polyclonal
Specificity:	Expected reactivity: Cow, Dog, Goat, Guinea Pig, Horse, Human, Mouse, Rabbit, Rat Homology: Cow: 100%; Dog: 100%; Goat: 100%; Guinea Pig: 100%; Horse: 100%; Human: 100%; Mouse: 100%; Rabbit: 100%; Rat: 100%
Formulation:	Liquid. Purified antibody supplied in 1x PBS buffer with 0.09% (w/v) sodium azide and 2% sucrose. <i>Note that this product is shipped as lyophilized powder to China customers.</i>
Concentration:	lot specific
Purification:	Affinity Purified
Conjugation:	Unconjugated
Storage:	For short term use, store at 2-8°C up to 1 week. For long term storage, store at -20°C in small aliquots to prevent freeze-thaw cycles.
Stability:	Shelf life: one year from despatch.
Predicted Protein Size:	40kDa
Gene Name:	opsin 1 (cone pigments), medium-wave-sensitive (color blindness, deutan)
Database Link:	NP_032132 Entrez Gene 14539 Mouse O35599
Background:	Visual pigments are the light-absorbing molecules that mediate vision. They consist of an apoprotein, opsin, covalently linked to cis-retinal. Opn1mw may increase spectral sensitivity in dim light.
Synonyms:	CBBM; CBD; GCP; MGC176615; MGC177321; MGC198468; MGC198469; OPN1MW1



[View online »](#)

Product images:



WB Suggested Anti-Opn1mw Antibody
Titration: 1.0 ug/ml
Positive Control: Mouse Thymus