

Product datasheet for **TA357612**

Rnls Rabbit Polyclonal Antibody

Product data:

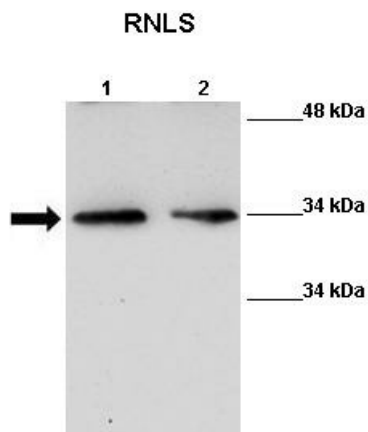
Product Type:	Primary Antibodies
Applications:	WB
Reactivity:	Human, Mouse
Host:	Rabbit
Clonality:	Polyclonal
Specificity:	Expected reactivity: Dog, Guinea Pig, Horse, Human, Mouse, Pig, Rabbit, Rat Homology: Dog: 79%; Guinea Pig: 93%; Horse: 100%; Human: 100%; Mouse: 100%; Pig: 100%; Rabbit: 100%; Rat: 100%
Formulation:	Liquid. Purified antibody supplied in 1x PBS buffer with 0.09% (w/v) sodium azide and 2% sucrose. <i>Note that this product is shipped as lyophilized powder to China customers.</i>
Concentration:	lot specific
Purification:	Affinity Purified
Conjugation:	Unconjugated
Storage:	For short term use, store at 2-8°C up to 1 week. For long term storage, store at -20°C in small aliquots to prevent freeze-thaw cycles.
Stability:	Shelf life: one year from despatch.
Predicted Protein Size:	33kDa
Gene Name:	renalase, FAD-dependent amine oxidase
Database Link:	NP_001161290 Entrez Gene 55328 Human Entrez Gene 67795 Mouse A7RDN6
Background:	Rnls is a probable FAD-dependent amine oxidase secreted by the kidney, which circulates in blood and modulates cardiac function and systemic blood pressure. It degrades catecholamines such as dopamine, norepinephrine and epinephrine in vitro. It lowers blood pressure in vivo by decreasing cardiac contractility and heart rate and preventing a compensatory increase in peripheral vascular tone, suggesting a causal link to the increased plasma catecholamine and heightened cardiovascular risk. High concentrations of catecholamines activate plasma renalase and promotes its secretion and synthesis.



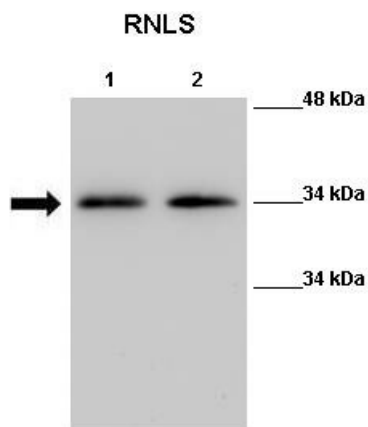
[View online »](#)

Synonyms: C10orf59; FLJ11218; RENALASE

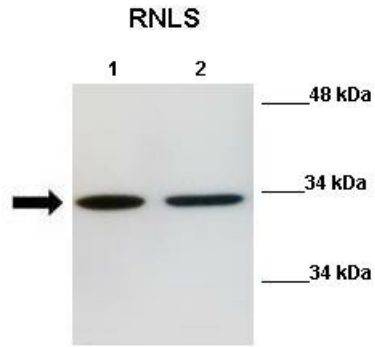
Product images:



WB Suggested Anti-Rnls Antibody
 Positive Control: Lane 1: 40ug Mouse liver tissue lysate Lane 2: 40ug Mouse liver tissue lysate
 Primary Antibody Dilution : 1:500
 Secondary Antibody : Anti-rabbit-HRP
 Secondary Antibody Dilution : 1:2500
 Submitted by: Nitish R Mahapatra, IIT Madras



WB Suggested Anti-Rnls Antibody
 Positive Control: Lane 1: 40ug Mouse kidney tissue lysate Lane 2: 40ug Mouse kidney tissue lysate
 Primary Antibody Dilution : 1:500
 Secondary Antibody : Anti-rabbit-HRP
 Secondary Antibody Dilution : 1:2500
 Submitted by: Nitish R Mahapatra, IIT Madras



WB Suggested Anti-Rnls Antibody
 Positive Control: Lane 1: 40ug Mouse N2a cell lysate Lane 2: 40ug Mouse N2a cell lysate
 Primary Antibody Dilution : 1:500
 Secondary Antibody : Anti-rabbit-HRP
 Secondary Antibody Dilution : 1:2500
 Submitted by: Nitish R Mahapatra, IIT Madras

Rnls



Host: Rabbit
 Target Name: Rnls
 Sample Tissue: Human Fetal Brain
 Antibody Dilution: 1.0ug/ml