

Product datasheet for **TA357610**

BSND Rabbit Polyclonal Antibody

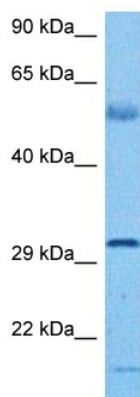
Product data:

Product Type:	Primary Antibodies
Reactivity:	Human
Host:	Rabbit
Clonality:	Polyclonal
Immunogen:	The immunogen is a synthetic peptide directed towards the middle region of human BSND
Specificity:	Expected reactivity: Human, Pig Homology: Human: 100%; Pig: 77%
Formulation:	Liquid. Purified antibody supplied in 1x PBS buffer with 0.09% (w/v) sodium azide and 2% sucrose. <i>Note that this product is shipped as lyophilized powder to China customers.</i>
Concentration:	lot specific
Purification:	Affinity purified
Conjugation:	Unconjugated
Storage:	For short term use, store at 2-8°C up to 1 week. For long term storage, store at -20°C in small aliquots to prevent freeze-thaw cycles.
Stability:	Shelf life: one year from despatch.
Predicted Protein Size:	35 kDa
Gene Name:	barttin CLCNK type accessory beta subunit
Database Link:	NP_476517 Entrez Gene 7809 Human Q8WZ55
Background:	This gene encodes an essential beta subunit for CLC chloride channels. These heteromeric channels localize to basolateral membranes of renal tubules and of potassium-secreting epithelia of the inner ear. Mutations in this gene have been associated with Bartter syndrome with sensorineural deafness.
Synonyms:	BART; barttin; DFNB73; MGC119283; MGC119284; MGC119285



[View online »](#)

Product images:



Host: Rabbit
Target Name: BSND
Sample Type: Liver Tumor Lysate
Antibody Dilution: 1.0 μ g/ml

Host: Rabbit
Target Name: BSND
Sample Tissue: Human Liver Tumor lysates
Antibody Dilution: 1 μ g/ml