

Product datasheet for **TA357602**

CAPS1 (CADPS) Rabbit Polyclonal Antibody

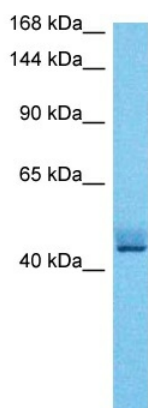
Product data:

Product Type:	Primary Antibodies
Applications:	WB
Reactivity:	Human
Host:	Rabbit
Clonality:	Polyclonal
Immunogen:	The immunogen is a synthetic peptide directed towards the C-terminal region of Human CAPS1
Specificity:	Expected reactivity: Cow, Dog, Guinea Pig, Horse, Human, Mouse, Rabbit, Rat, Zebrafish Homology: Cow: 100%; Dog: 100%; Guinea Pig: 100%; Horse: 100%; Human: 100%; Mouse: 100%; Rabbit: 100%; Rat: 100%; Zebrafish: 100%
Formulation:	Liquid. Purified antibody supplied in 1x PBS buffer with 0.09% (w/v) sodium azide and 2% sucrose.
Concentration:	lot specific
Purification:	Affinity purified
Conjugation:	Unconjugated
Storage:	For short term use, store at 2-8°C up to 1 week. For long term storage, store at -20°C in small aliquots to prevent freeze-thaw cycles.
Stability:	Shelf life: one year from despatch.
Predicted Protein Size:	50kDa
Gene Name:	Ca2+ dependent secretion activator
Database Link:	Entrez Gene 8618 Human Q9ULU8-5
Background:	This gene encodes a novel neural/endocrine-specific cytosolic and peripheral membrane protein required for the Ca ²⁺ -regulated exocytosis of secretory vesicles. The protein acts at a stage in exocytosis that follows ATP-dependent priming, which involves the essential synthesis of phosphatidylinositol 4,5-bisphosphate (PtdIns(4,5)P ₂). Alternative splicing has been observed at this locus and three variants, encoding distinct isoforms, are described.
Synonyms:	CADPS1; CAPS; CAPS-1; CAPS1; KIAA1121



[View online »](#)

Product images:



Host: Rabbit
Target Name: CAPS1
Sample Tissue: Lung Tumor Lysate
Antibody Dilution: 1.0 μ g/ml

Host: Rabbit
Target Name: CAPS1
Sample Type: Lung Tumor lysates
Antibody Dilution: 1.0ug/ml