

Product datasheet for **TA357600**

SYT12 Rabbit Polyclonal Antibody

Product data:

Product Type:	Primary Antibodies
Reactivity:	Human
Host:	Rabbit
Clonality:	Polyclonal
Immunogen:	The immunogen is a synthetic peptide directed towards the N terminal region of human SYT12
Specificity:	Expected reactivity: Cow, Horse, Human, Pig, Rabbit Homology: Cow: 79%; Horse: 79%; Human: 100%; Pig: 79%; Rabbit: 79%
Formulation:	Liquid. Purified antibody supplied in 1x PBS buffer with 0.09% (w/v) sodium azide and 2% sucrose.
Concentration:	lot specific
Purification:	Affinity purified
Conjugation:	Unconjugated
Storage:	For short term use, store at 2-8°C up to 1 week. For long term storage, store at -20°C in small aliquots to prevent freeze-thaw cycles.
Stability:	Shelf life: one year from despatch.
Predicted Protein Size:	46 kDa
Gene Name:	synaptotagmin 12
Database Link:	NP_001171351.1 Entrez Gene 91683 Human Q8IV01
Background:	This gene is a member of the synaptotagmin gene family and encodes a protein similar to other family members that mediate calcium-dependent regulation of membrane trafficking in synaptic transmission. Studies of the orthologous gene in rat have shown that the encoded protein selectively modulates spontaneous synaptic-vesicle exocytosis and may also be involved in regulating calcium independent secretion in nonneuronal cells. Alternative splicing results in multiple transcript variants. The gene has previously been referred to as synaptotagmin XI but has been renamed synaptotagmin XII to be standard with mouse and rat official nomenclature.

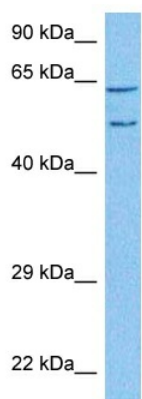


[View online »](#)

Synonyms: SRG1; SYT11; SytXII

Protein Families: Secreted Protein, Transmembrane

Product images:



Host: Rabbit
Target Name: SYT12
Sample Type: Ovary Tumor Lysate
Antibody Dilution: 1.0 μ g/ml

Host: Rabbit
Target Name: SYT12
Sample Tissue: Human Ovary Tumor lysates
Antibody Dilution: 1 μ g/ml