

Product datasheet for **TA357597**

Scamp5 Rabbit Polyclonal Antibody

Product data:

Product Type:	Primary Antibodies
Applications:	WB
Reactivity:	Mouse
Host:	Rabbit
Clonality:	Polyclonal
Specificity:	Expected reactivity: Cow, Dog, Guinea Pig, Horse, Human, Mouse, Rabbit, Rat, Zebrafish Homology: Cow: 100%; Dog: 100%; Guinea Pig: 100%; Horse: 100%; Human: 100%; Mouse: 100%; Rabbit: 100%; Rat: 100%; Zebrafish: 93%
Formulation:	Liquid. Purified antibody supplied in 1x PBS buffer with 0.09% (w/v) sodium azide and 2% sucrose. <i>Note that this product is shipped as lyophilized powder to China customers.</i>
Concentration:	lot specific
Purification:	Affinity Purified
Conjugation:	Unconjugated
Storage:	For short term use, store at 2-8°C up to 1 week. For long term storage, store at -20°C in small aliquots to prevent freeze-thaw cycles.
Stability:	Shelf life: one year from despatch.
Predicted Protein Size:	26kDa
Gene Name:	secretory carrier membrane protein 5
Database Link:	NP_064666 Entrez Gene 56807 Mouse Q9JKD3
Background:	Scamp5 is required for the calcium-dependent exocytosis of signal sequence-containing cytokines such as CCL5. It probably acts in cooperation with the SNARE machinery.
Synonyms:	DKFZp686L1799; hSCAMP5; MGC24969

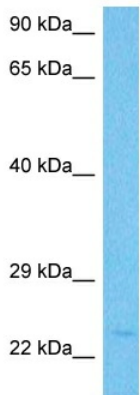


[View online »](#)

Product images:



WB Suggested Anti-Scamp5 Antibody
Titration: 1.0 ug/ml
Positive Control: Mouse Liver



Host: Rabbit
Target Name: Scamp5
Sample Type: Mouse Thymus Lysate
Antibody Dilution: 1.0µg/ml

Host: Rabbit
Target Name: Scamp5
Sample Tissue: Mouse Thymus
Antibody Dilution: 3ug/ml