

## Product datasheet for **TA357595**

### Scamp1 Rabbit Polyclonal Antibody

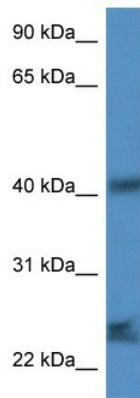
#### Product data:

Product Type:	Primary Antibodies
Applications:	WB
Reactivity:	Mouse
Host:	Rabbit
Clonality:	Polyclonal
Specificity:	<b>Expected reactivity:</b> Cow, Dog, Guinea Pig, Horse, Human, Mouse, Rabbit, Rat, Zebrafish <b>Homology:</b> Cow: 100%; Dog: 100%; Guinea Pig: 100%; Horse: 100%; Human: 100%; Mouse: 100%; Rabbit: 100%; Rat: 100%; Zebrafish: 93%
Formulation:	Liquid. Purified antibody supplied in 1x PBS buffer with 0.09% (w/v) sodium azide and 2% sucrose. <i>Note that this product is shipped as lyophilized powder to China customers.</i>
Concentration:	lot specific
Purification:	Affinity Purified
Conjugation:	Unconjugated
Storage:	For short term use, store at 2-8°C up to 1 week. For long term storage, store at -20°C in small aliquots to prevent freeze-thaw cycles.
Stability:	Shelf life: one year from despatch.
Predicted Protein Size:	38kDa
Gene Name:	secretory carrier membrane protein 1
Database Link:	<a href="#">NP_083429</a> <a href="#">Entrez Gene 107767 Mouse</a> <a href="#">Q8K021</a>
Background:	Scamp1 functions in post-Golgi recycling pathways. It acts as a recycling carrier to the cell surface.
Synonyms:	SCAMP; SCAMP37

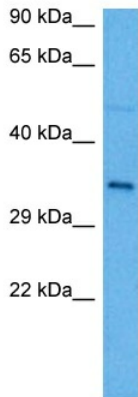


[View online »](#)

Product images:

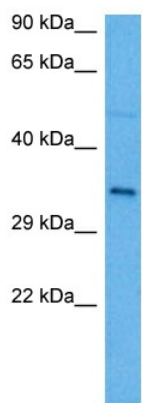


WB Suggested Anti-Scamp1 Antibody  
Titration: 1.0 ug/ml  
Positive Control: Mouse Spleen



Host: Rabbit  
Target Name: Scamp1  
Sample Type: Mouse Brain Lysate  
Antibody Dilution: 1.0µg/ml

Host: Rabbit  
Target Name: SCAMP1  
Sample Tissue: Mouse Brain  
Antibody Dilution: 1 ug/ml



Host: Rabbit  
Target Name: Scamp1  
Sample Type: Mouse Brain Lysate  
Antibody Dilution: 1.0 $\mu$ g/ml

Host: Mouse  
Target Name: SCAMP1  
Sample Tissue: Mouse Brain  
Antibody Dilution: 1 $\mu$ g/ml