

Product datasheet for **TA357593**

Syt1 Rabbit Polyclonal Antibody

Product data:

Product Type:	Primary Antibodies
Applications:	IHC, WB
Reactivity:	Mouse
Host:	Rabbit
Clonality:	Polyclonal
Immunogen:	The immunogen is a synthetic peptide corresponding to a region of Mouse
Specificity:	Expected reactivity: Cow, Dog, Guinea Pig, Horse, Human, Mouse, Rabbit, Rat, Zebrafish Homology: Cow: 100%; Dog: 100%; Guinea Pig: 100%; Horse: 100%; Human: 100%; Mouse: 100%; Rabbit: 100%; Rat: 100%; Zebrafish: 100%
Formulation:	Liquid. Purified antibody supplied in 1x PBS buffer with 0.09% (w/v) sodium azide and 2% sucrose. <i>Note that this product is shipped as lyophilized powder to China customers.</i>
Concentration:	lot specific
Purification:	Affinity Purified
Conjugation:	Unconjugated
Storage:	For short term use, store at 2-8°C up to 1 week. For long term storage, store at -20°C in small aliquots to prevent freeze-thaw cycles.
Stability:	Shelf life: one year from despatch.
Predicted Protein Size:	47kDa
Gene Name:	synaptotagmin I
Database Link:	NP_033332 Entrez Gene 20979 Mouse P46096



[View online »](#)

Background:

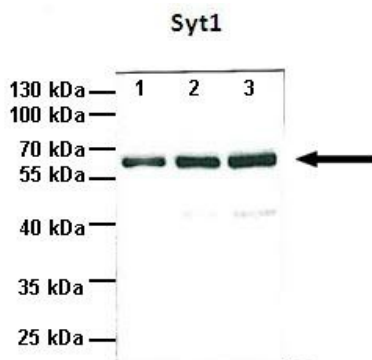
Syt1 may have a regulatory role in the membrane interactions during trafficking of synaptic vesicles at the active zone of the synapse. It binds acidic phospholipids with a specificity that requires the presence of both an acidic head group and a diacyl backbone. A Ca²⁺-dependent interaction between synaptotagmin and putative receptors for activated protein kinase C has also been reported. It can bind to at least three additional proteins in a Ca²⁺-independent manner; these are neuexins, syntaxin and AP2.

Synonyms:

DKFZp781D2042; P65; SVP65; SYT; Sytl

Product images:


Syt1 antibody - middle region (TA357593) validated by WB using Mouse Spleen lysate at 1.0ug/ml.



Lanes:

Lane1: 10ug mouse cortex brain lysate

Lane2: 25ug mouse cortex brain lysate

Lane3: 40ug mouse cortex brain lysate

Primary Antibody Dilution:

1:1000

Secondary Antibody:

Anti-rabbit HRP

Secondary Antibody Dilution:

1:2000

Gene Name:

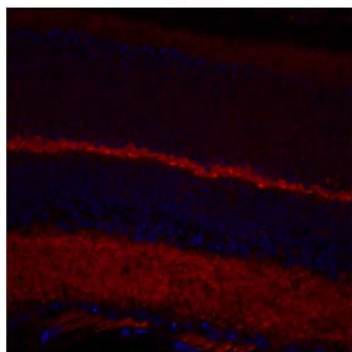
Syt1

Submitted by:

Anonymous

[See Immunoblot 2 Data and Customer Feedback for more Information](#)

Syt1



See Immunohistochemistry 1 Data for more information.

Sample Type: complete mouse retina sections

Red: Primary

Blue: DAPI

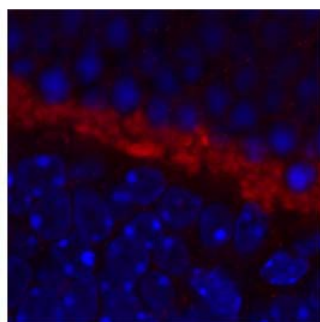
Primary Dilution: 1:200

Secondary Antibody: Goat anti-Rabbit AF568 IgG(H+L)

Secondary Dilution: 1:200

Image Submitted by: David Zenisek
Yale University

Syt1



See Immunohistochemistry 2 Data for more information.

Sample Type: outer mouse plexiform layer

Red: Primary

Blue: DAPI

Primary Dilution: 1:200

Secondary Antibody: Goat anti-Rabbit AF568 IgG(H+L)

Secondary Dilution: 1:200

Image Submitted by: David Zenisek
Yale University