

Product datasheet for TA357592

Syt1 Rabbit Polyclonal Antibody

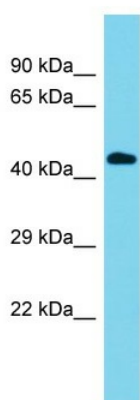
Product data:

Product Type:	Primary Antibodies
Applications:	WB
Reactivity:	Rat
Host:	Rabbit
Clonality:	Polyclonal
Immunogen:	The immunogen is a synthetic peptide directed towards the N-terminal region of Rat Syt1
Specificity:	Expected reactivity: Cow, Dog, Guinea Pig, Horse, Human, Mouse, Rabbit, Rat Homology: Cow: 100%; Dog: 100%; Guinea Pig: 100%; Horse: 100%; Human: 100%; Mouse: 100%; Rabbit: 100%; Rat: 100%
Formulation:	Liquid. Purified antibody supplied in 1x PBS buffer with 0.09% (w/v) sodium azide and 2% sucrose. <i>Note that this product is shipped as lyophilized powder to China customers.</i>
Concentration:	lot specific
Purification:	Affinity Purified
Conjugation:	Unconjugated
Storage:	For short term use, store at 2-8°C up to 1 week. For long term storage, store at -20°C in small aliquots to prevent freeze-thaw cycles.
Stability:	Shelf life: one year from despatch.
Predicted Protein Size:	46kDa
Gene Name:	synaptotagmin 1
Database Link:	NP_001028852 Entrez Gene 25716 Rat P21707
Background:	Syt1 is a integral component of synaptic vesicle membranes; It is important for exocytosis and vesicle trafficking to the active zone of synapses and may be the calcium sensor for calcium-dependent exocytosis.
Synonyms:	DKFZp781D2042; P65; SVP65; SYT; SytI



[View online »](#)

Product images:



Host: Rabbit
Target Name: Syt1
Sample Type: Rat Stomach lysates
Antibody Dilution: 1.0ug/ml