

Product datasheet for **TA357586**

UBA6 Rabbit Polyclonal Antibody

Product data:

Product Type:	Primary Antibodies
Applications:	WB
Reactivity:	Human
Host:	Rabbit
Clonality:	Polyclonal
Immunogen:	The immunogen is a synthetic peptide directed towards the C terminal region of human UBA6
Specificity:	Expected reactivity: Human Homology: Cow: 86%; Dog: 100%; Guinea Pig: 86%; Horse: 100%; Human: 100%; Mouse: 93%; Pig: 100%; Rabbit: 86%; Rat: 93%
Formulation:	Liquid. Purified antibody supplied in 1x PBS buffer with 0.09% (w/v) sodium azide and 2% sucrose. <i>Note that this product is shipped as lyophilized powder to China customers.</i>
Concentration:	lot specific
Purification:	Affinity purified
Conjugation:	Unconjugated
Storage:	For short term use, store at 2-8°C up to 1 week. For long term storage, store at -20°C in small aliquots to prevent freeze-thaw cycles.
Stability:	Shelf life: one year from despatch.
Predicted Protein Size:	115 kDa
Gene Name:	ubiquitin like modifier activating enzyme 6
Database Link:	NP_060697 Entrez Gene 55236 Human A0AVT1
Background:	Modification of proteins with ubiquitin or ubiquitin-like proteins controls many signaling networks and requires a ubiquitin-activating enzyme (E1), a ubiquitin conjugating enzyme (E2), and a ubiquitin protein ligase (E3). UBE1L2 is an E1 enzyme that initiates the activation and conjugation of ubiquitin-like proteins.

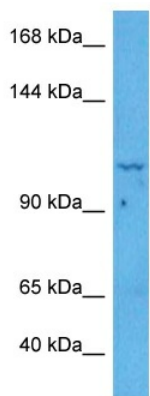


[View online »](#)

Synonyms: FLJ10808; FLJ23367; MOP-4; MOP4; UBE1L2

Protein Pathways: Ubiquitin mediated proteolysis

Product images:



Host: Rabbit
Target Name: UBA6
Sample Type: 786-0 Cell Lysate
Antibody Dilution: 1.0 μ g/ml

Host: Rabbit
Target Name: UBA6
Sample Tissue: Human 786-0 Whole Cell lysates
Antibody Dilution: 1 μ g/ml