

## Product datasheet for **TA357583**

### RWDD3 Rabbit Polyclonal Antibody

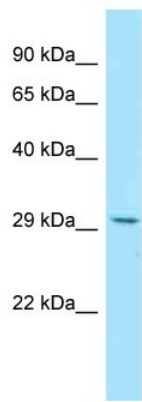
#### Product data:

Product Type:	Primary Antibodies
Applications:	WB
Reactivity:	Human
Host:	Rabbit
Clonality:	Polyclonal
Specificity:	<b>Expected reactivity:</b> Dog, Guinea Pig, Human, Mouse, Rat <b>Homology:</b> Dog: 86%; Guinea Pig: 86%; Human: 100%; Mouse: 79%; Rat: 86%
Formulation:	Liquid. Purified antibody supplied in 1x PBS buffer with 0.09% (w/v) sodium azide and 2% sucrose. <i>Note that this product is shipped as lyophilized powder to China customers.</i>
Concentration:	lot specific
Purification:	Affinity Purified
Conjugation:	Unconjugated
Storage:	For short term use, store at 2-8°C up to 1 week. For long term storage, store at -20°C in small aliquots to prevent freeze-thaw cycles.
Stability:	Shelf life: one year from despatch.
Predicted Protein Size:	30kDa
Gene Name:	RWD domain containing 3
Database Link:	<a href="#">NP_056300</a> <a href="#">Entrez Gene 25950 Human</a> <a href="#">Q9Y3V2</a>
Background:	RWDD3 enhances the sumoylation of a number of proteins including HIF1A, PIAS and I-kappa-B, through direct interaction with UBC9. RWDD3 has no effect on ubiquitination.
Synonyms:	DKFZP566K023; RSUME

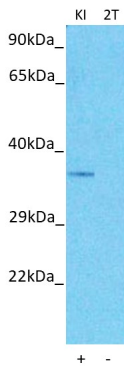


[View online »](#)

Product images:



WB Suggested Anti-RWDD3 Antibody  
 Titration: 1.0 ug/ml  
 Positive Control: 293T Whole Cell  
 RWDD3 is supported by BioGPS gene expression data to be expressed in HEK293T



Host: Rabbit  
 Target name: RWDD3  
 Positive control: ~25ug Human Kidney (KI)  
 Negative control: ~25ug 293T Cell Lysate (2T)  
 Antibody concentration: 1ug/ml

Host: Rabbit  
 Target: RWDD3  
 Positive control (+): Human kidney (KI)  
 Negative control (-): 293T (2T)  
 Antibody concentration: 1ug/ml