

Product datasheet for **TA357578**

Uchl1 Rabbit Polyclonal Antibody

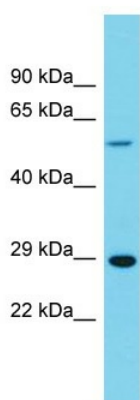
Product data:

Product Type:	Primary Antibodies
Applications:	WB
Reactivity:	Rat
Host:	Rabbit
Clonality:	Polyclonal
Immunogen:	The immunogen is a synthetic peptide directed towards the middle region of Rat UCHL1.
Specificity:	Expected reactivity: Cow, Dog, Goat, Guinea Pig, Horse, Human, Mouse, Rabbit, Rat Homology: Cow: 93%; Dog: 93%; Goat: 93%; Guinea Pig: 100%; Horse: 93%; Human: 100%; Mouse: 93%; Rabbit: 100%; Rat: 100%
Formulation:	Liquid. Purified antibody supplied in 1x PBS buffer with 0.09% (w/v) sodium azide and 2% sucrose. <i>Note that this product is shipped as lyophilized powder to China customers.</i>
Concentration:	lot specific
Purification:	Affinity Purified
Conjugation:	Unconjugated
Storage:	For short term use, store at 2-8°C up to 1 week. For long term storage, store at -20°C in small aliquots to prevent freeze-thaw cycles.
Stability:	Shelf life: one year from despatch.
Predicted Protein Size:	24kDa
Gene Name:	ubiquitin C-terminal hydrolase L1
Database Link:	NP_058933 Entrez Gene 29545 Rat Q00981
Background:	UCHL1 catalyzes the hydrolysis of ubiquitin carboxy-terminal thiolesters to form ubiquitin and a thiol; It may play a role in neuropathic pain.
Synonyms:	PARK5; PGP9.5; PGP95; Uch-L1



[View online »](#)

Product images:



Host: Rabbit
Target Name: Uchl1
Sample Type: Rat Stomach lysates
Antibody Dilution: 1.0ug/ml