

Product datasheet for TA357573

CDC26 Rabbit Polyclonal Antibody

Product data:

Product Type:	Primary Antibodies
Applications:	WB
Reactivity:	Human
Host:	Rabbit
Clonality:	Polyclonal
Immunogen:	The immunogen is a synthetic peptide directed towards the middle region of human CDC26
Specificity:	Expected reactivity: Cow, Dog, Guinea Pig, Horse, Human, Mouse, Pig, Rabbit, Rat Homology: Cow: 100%; Dog: 100%; Guinea Pig: 86%; Horse: 100%; Human: 100%; Mouse: 100%; Pig: 100%; Rabbit: 100%; Rat: 100%
Formulation:	Liquid. Purified antibody supplied in 1x PBS buffer with 0.09% (w/v) sodium azide and 2% sucrose.
Concentration:	lot specific
Purification:	Affinity Purified
Conjugation:	Unconjugated
Storage:	For short term use, store at 2-8°C up to 1 week. For long term storage, store at -20°C in small aliquots to prevent freeze-thaw cycles.
Stability:	Shelf life: one year from despatch.
Predicted Protein Size:	10kDa
Gene Name:	cell division cycle 26
Database Link:	NP_644815 Entrez Gene 246184 Human Q8NHZ8
Background:	The protein encoded by this gene is highly similar to <i>Saccharomyces cerevisiae</i> Cdc26, a component of cell cycle anaphase-promoting complex (APC). APC is composed of a group of highly conserved proteins and functions as a cell cycle-regulated ubiquitin-protein ligase. APC thus is responsible for the cell cycle regulated proteolysis of various proteins.
Synonyms:	C9orf17



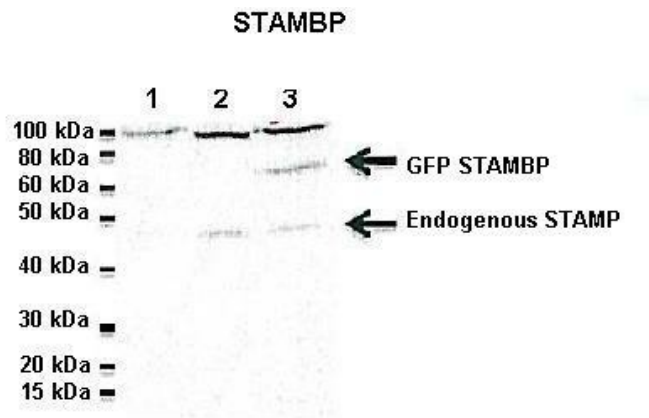
[View online »](#)

Protein Pathways: Cell cycle, Oocyte meiosis, Progesterone-mediated oocyte maturation, Ubiquitin mediated proteolysis

Product images:



WB Suggested Anti-CDC26 Antibody Titration: 0.2-1 ug/ml
 ELISA Titer: 1:1562500
 Positive Control: A549 cell lysate



Lanes:
 1: 20ug Jukart cell lysate, 2: 20ug untransfected HeLa lysate, 3: 20ug GFP-STAMPB transfected HeLa lysate
 Primary Antibody Dilution: 1:1000
 Secondary Antibody: Goat anti-rabbit-HRP
 Secondary Antibody Dilution: 1:2000
 Gene Name: CDC26
 Submitted by: Dr. N. Blake, University of Liverpool

See Immunoblot 3 Data and customer Feedback for more Information