

## Product datasheet for **TA357570**

### SERPINB6 Rabbit Polyclonal Antibody

#### Product data:

Product Type:	Primary Antibodies
Applications:	WB
Reactivity:	Human
Host:	Rabbit
Clonality:	Polyclonal
Immunogen:	The immunogen is a synthetic peptide directed towards the middle region of human SERPINB6
Specificity:	<b>Expected reactivity:</b> Cow, Human <b>Homology:</b> Cow: 79%; Human: 100%
Formulation:	Liquid. Purified antibody supplied in 1x PBS buffer with 0.09% (w/v) sodium azide and 2% sucrose. <i>Note that this product is shipped as lyophilized powder to China customers.</i>
Concentration:	lot specific
Purification:	Affinity Purified
Conjugation:	Unconjugated
Storage:	For short term use, store at 2-8°C up to 1 week. For long term storage, store at -20°C in small aliquots to prevent freeze-thaw cycles.
Stability:	Shelf life: one year from despatch.
Predicted Protein Size:	41kDa
Gene Name:	serpin family B member 6
Database Link:	<a href="#">NP_004559</a> <a href="#">Entrez Gene 5269 Human P35237</a>



[View online »](#)

**Background:**

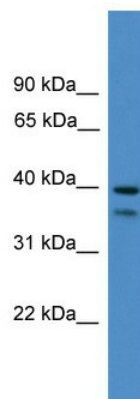
The protein encoded by this gene is a member of the serpin (serine proteinase inhibitor) superfamily, and ovalbumin(ov)-serpin subfamily. It was originally discovered as a placental thrombin inhibitor. The mouse homolog was found to be expressed in the hair cells of the inner ear. Mutations in this gene are associated with nonsyndromic progressive hearing loss, suggesting that this serpin plays an important role in the inner ear in the protection against leakage of lysosomal content during stress, and that loss of this protection results in cell death and sensorineural hearing loss. Alternatively spliced transcript variants have been found for this gene.

**Synonyms:**

CAP; DKFZp686I04222; MGC111370; MSTP057; OTTHUMP00000017778; OTTHUMP00000017779; OTTHUMP00000017781; OTTHUMP00000017782; PI-6; PI6; PTI; SPI3

**Protein Families:**

Druggable Genome

**Product images:**

WB Suggested Anti-SERPINB6 Antibody Titration:  
0.2-1 ug/ml  
ELISA Titer: 1:312500  
Positive Control: Human Placenta