

Product datasheet for **TA357569**

SERPINB7 Rabbit Polyclonal Antibody

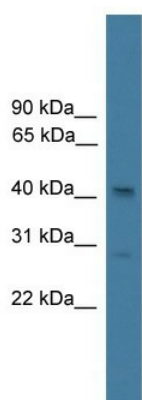
Product data:

Product Type:	Primary Antibodies
Applications:	WB
Reactivity:	Human
Host:	Rabbit
Clonality:	Polyclonal
Immunogen:	The immunogen is a synthetic peptide directed towards the N terminal region of human SERPINB7
Specificity:	Expected reactivity: Human Homology: Human: 100%
Formulation:	Liquid. Purified antibody supplied in 1x PBS buffer with 0.09% (w/v) sodium azide and 2% sucrose. <i>Note that this product is shipped as lyophilized powder to China customers.</i>
Concentration:	lot specific
Purification:	Affinity Purified
Conjugation:	Unconjugated
Storage:	For short term use, store at 2-8°C up to 1 week. For long term storage, store at -20°C in small aliquots to prevent freeze-thaw cycles.
Stability:	Shelf life: one year from despatch.
Predicted Protein Size:	43kDa
Gene Name:	serpin family B member 7
Database Link:	NP_003775 Entrez Gene 8710 Human O75635
Background:	SERPINB7 might function as an inhibitor of Lys-specific proteases. SERPINB7 might influence the maturation of megakaryocytes via its action as a serpin.
Synonyms:	DKFZp686D06190; MEGSIN; MGC120014; MGC120015; TP55
Protein Families:	Druggable Genome



[View online »](#)

Product images:



WB Suggested Anti-SERPINB7 Antibody Titration:
0.2-1 ug/ml
ELISA Titer: 1:1562500
Positive Control: PANC1 cell lysate