

Product datasheet for **TA357567**

Kallistatin (SERPINA4) Rabbit Polyclonal Antibody

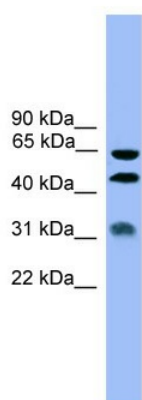
Product data:

Product Type:	Primary Antibodies
Applications:	WB
Reactivity:	Human
Host:	Rabbit
Clonality:	Polyclonal
Immunogen:	The immunogen is a synthetic peptide directed towards the middle region of human SERPINA4
Specificity:	Expected reactivity: Human, Zebrafish Homology: Human: 100%; Zebrafish: 75%
Formulation:	Liquid. Purified antibody supplied in 1x PBS buffer with 0.09% (w/v) sodium azide and 2% sucrose.
Concentration:	lot specific
Purification:	Affinity Purified
Conjugation:	Unconjugated
Storage:	For short term use, store at 2-8°C up to 1 week. For long term storage, store at -20°C in small aliquots to prevent freeze-thaw cycles.
Stability:	Shelf life: one year from despatch.
Predicted Protein Size:	48kDa
Gene Name:	serpin family A member 4
Database Link:	NP_006206 Entrez Gene 5267 Human P29622
Background:	SERPINA4 inhibits human amidolytic and kininogenase activities of tissue kallikrein. Inhibition is achieved by formation of an equimolar, heat- and SDS-stable complex between the inhibitor and the enzyme, and generation of a small C-terminal fragment of the inhibitor due to cleavage at the reactive site by tissue kallikrein.
Synonyms:	KAL; kallistatin; KLST; KST; PI4
Protein Families:	Druggable Genome, Secreted Protein



[View online »](#)

Product images:



WB Suggested Anti-SERPINA4 Antibody Titration:
0.2-1 ug/ml
ELISA Titer: 1:312500
Positive Control: MCF7 cell lysate