

Product datasheet for **TA357565**

GCET1 (SERPINA9) Rabbit Polyclonal Antibody

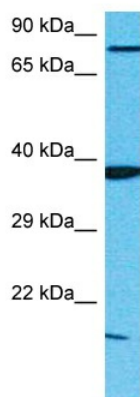
Product data:

Product Type:	Primary Antibodies
Applications:	WB
Reactivity:	Human
Host:	Rabbit
Clonality:	Polyclonal
Immunogen:	The immunogen is a synthetic peptide directed towards the C-terminal region of Human SERPINA9
Specificity:	Expected reactivity: Human
Formulation:	Liquid. Purified antibody supplied in 1x PBS buffer with 0.09% (w/v) sodium azide and 2% sucrose. <i>Note that this product is shipped as lyophilized powder to China customers.</i>
Concentration:	lot specific
Purification:	Affinity Purified
Conjugation:	Unconjugated
Storage:	For short term use, store at 2-8°C up to 1 week. For long term storage, store at -20°C in small aliquots to prevent freeze-thaw cycles.
Stability:	Shelf life: one year from despatch.
Predicted Protein Size:	37kDa
Gene Name:	serpin family A member 9
Database Link:	Entrez Gene 327657 Human Q86WD7-6
Background:	SERPINA9 is a protease inhibitor that inhibits trypsin and trypsin- like serine proteases (in vitro). It inhibits plasmin and thrombin with lower efficiency (in vitro).
Synonyms:	centerin; GCET1; MGC131906; SERPINA11; SERPINA11b



[View online »](#)

Product images:



Host: Rabbit
Target Name: SERPINA9
Sample Tissue: MCF7 Cell Lysate
Antibody Dilution: 1.0 μ g/ml

Host: Rabbit
Target Name: SERPINA9
Sample Type: MCF7 Whole Cell lysates
Antibody Dilution: 1.0ug/ml