

## Product datasheet for **TA357563**

### WAC Rabbit Polyclonal Antibody

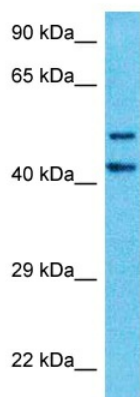
#### Product data:

Product Type:	Primary Antibodies
Applications:	WB
Reactivity:	Human
Host:	Rabbit
Clonality:	Polyclonal
Immunogen:	The immunogen is a synthetic peptide directed towards the N-terminal region of Human WAC
Specificity:	<b>Expected reactivity:</b> Human
Formulation:	Liquid. Purified antibody supplied in 1x PBS buffer with 0.09% (w/v) sodium azide and 2% sucrose.
Concentration:	lot specific
Purification:	Affinity Purified
Conjugation:	Unconjugated
Storage:	For short term use, store at 2-8°C up to 1 week. For long term storage, store at -20°C in small aliquots to prevent freeze-thaw cycles.
Stability:	Shelf life: one year from despatch.
Predicted Protein Size:	59kDa
Gene Name:	WW domain containing adaptor with coiled-coil
Database Link:	<a href="#">Entrez Gene 51322 Human Q9BTA9-5</a>
Background:	The protein encoded by this gene contains a WW domain, which is a protein module found in a wide range of signaling proteins. This domain mediates protein-protein interactions and binds proteins containing short linear peptide motifs that are proline-rich or contain at least one proline. This gene product shares 94% sequence identity with the WAC protein in mouse, however, its exact function is not known. Alternative splicing results in multiple transcript variants.
Synonyms:	1110067P07Rik; bA48B24; bA48B24.1; BM-016; FLJ31290; KIAA1844; MGC10753; PRO1741; Wwp4



[View online »](#)

## Product images:



Host: Rabbit  
Target Name: WAC  
Sample Tissue: Hela Cell Lysate  
Antibody Dilution: 1.0 $\mu$ g/ml

Host: Rabbit  
Target Name: WAC  
Sample Type: Hela Whole Cell lysates  
Antibody Dilution: 1.0ug/ml