

Product datasheet for **TA357561**

SLPI Rabbit Polyclonal Antibody

Product data:

Product Type:	Primary Antibodies
Applications:	WB
Reactivity:	Human
Host:	Rabbit
Clonality:	Polyclonal
Immunogen:	The immunogen is a synthetic peptide directed towards the N terminal region of human SLPI
Specificity:	Expected reactivity: Human Homology: Human: 100%
Formulation:	Liquid. Purified antibody supplied in 1x PBS buffer with 0.09% (w/v) sodium azide and 2% sucrose. <i>Note that this product is shipped as lyophilized powder to China customers.</i>
Concentration:	lot specific
Purification:	Affinity Purified
Conjugation:	Unconjugated
Storage:	For short term use, store at 2-8°C up to 1 week. For long term storage, store at -20°C in small aliquots to prevent freeze-thaw cycles.
Stability:	Shelf life: one year from despatch.
Predicted Protein Size:	12kDa
Gene Name:	secretory leukocyte peptidase inhibitor
Database Link:	NP_003055 Entrez Gene 6590 Human P03973
Background:	This gene encodes a secreted inhibitor which protects epithelial tissues from serine proteases. It is found in various secretions including seminal plasma, cervical mucus, and bronchial secretions, and has affinity for trypsin, leukocyte elastase, and cathepsin G. Its inhibitory effect contributes to the immune response by protecting epithelial surfaces from attack by endogenous proteolytic enzymes; the protein is also thought to have broad-spectrum anti-biotic activity.



[View online »](#)

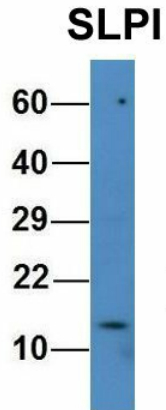
Synonyms: ALK1; ALP; antileukoproteinase; BLPI; HUSI; HUSI-1; HUSI-I; MPI; WAP4; WFDC4

Protein Families: Secreted Protein

Product images:



WB Suggested Anti-SLPI Antibody Titration: 0.2-1 ug/ml
 ELISA Titer: 1:1562500
 Positive Control: Human heart



Rabbit Anti-SLPI
 Sample Type: Human Fetal Brain
 Antibody Concentration: 1ug/mL

Host: Rabbit
 Target Name: SLPI
 Sample Type: Human Fetal Brain
 Antibody Dilution: 1.0ug/ml