

Product datasheet for **TA357559**

RWDD1 Rabbit Polyclonal Antibody

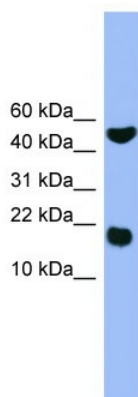
Product data:

Product Type:	Primary Antibodies
Applications:	WB
Reactivity:	Human
Host:	Rabbit
Clonality:	Polyclonal
Immunogen:	The immunogen is a synthetic peptide directed towards the middle region of human RWDD1
Specificity:	Expected reactivity: Cow, Dog, Guinea Pig, Horse, Human, Mouse, Pig, Rabbit, Rat, Zebrafish Homology: Cow: 100%; Dog: 100%; Guinea Pig: 93%; Horse: 100%; Human: 100%; Mouse: 100%; Pig: 100%; Rabbit: 100%; Rat: 100%; Zebrafish: 83%
Formulation:	Liquid. Purified antibody supplied in 1x PBS buffer with 0.09% (w/v) sodium azide and 2% sucrose. <i>Note that this product is shipped as lyophilized powder to China customers.</i>
Concentration:	lot specific
Purification:	Affinity Purified
Conjugation:	Unconjugated
Storage:	For short term use, store at 2-8°C up to 1 week. For long term storage, store at -20°C in small aliquots to prevent freeze-thaw cycles.
Stability:	Shelf life: one year from despatch.
Predicted Protein Size:	17kDa
Gene Name:	RWD domain containing 1
Database Link:	NP_001007465 Entrez Gene 51389 Human Q9H446
Background:	The function of this protein remains unknown.
Synonyms:	CGI-24; DFRP2; PTD013



[View online »](#)

Product images:



WB Suggested Anti-RWDD1 Antibody Titration:
0.2-1 $\mu\text{g/ml}$
ELISA Titer: 1:1562500
Positive Control: Jurkat cell lysate RWDD1 is supported by BioGPS gene expression data to be expressed in Jurkat