

## Product datasheet for **TA357558**

### alpha 2 Macroglobulin (A2M) Rabbit Polyclonal Antibody

#### Product data:

Product Type:	Primary Antibodies
Applications:	IHC, WB
Reactivity:	Human
Host:	Rabbit
Clonality:	Polyclonal
Specificity:	<b>Expected reactivity:</b> Human <b>Homology:</b> Human: 100%
Formulation:	Liquid. Purified antibody supplied in 1x PBS buffer with 0.09% (w/v) sodium azide and 2% sucrose. <i>Note that this product is shipped as lyophilized powder to China customers.</i>
Concentration:	lot specific
Purification:	Affinity Purified
Conjugation:	Unconjugated
Storage:	For short term use, store at 2-8°C up to 1 week. For long term storage, store at -20°C in small aliquots to prevent freeze-thaw cycles.
Stability:	Shelf life: one year from despatch.
Predicted Protein Size:	161kDa
Gene Name:	alpha-2-macroglobulin
Database Link:	<a href="#">NP_000005</a> <a href="#">Entrez Gene 2 Human P01023</a>
Background:	Alpha-2-macroglobulin is a protease inhibitor and cytokine transporter. It inhibits many proteases, including trypsin, thrombin and collagenase. A2M is implicated in Alzheimer disease (AD) due to its ability to mediate the clearance and degradation of A-beta, the major component of beta-amyloid deposits.
Synonyms:	Alpha-2-M; alpha-2-macroglobulin; CPAMD5; DKFZp779B086; FWP007; S863-7
Protein Families:	Druggable Genome, Secreted Protein
Protein Pathways:	Complement and coagulation cascades

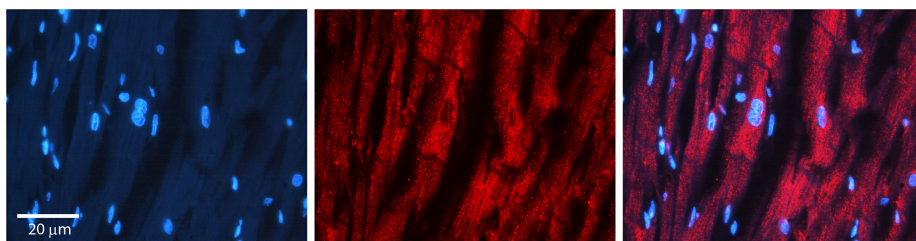


[View online »](#)

## Product images:



Host: Rabbit  
Target Name: A2M  
Antibody Dilution: 1.0ug/ml  
Sample Type: Human skin



Rabbit Anti-A2M Antibody  
Catalog Number: TA357558  
Formalin Fixed Paraffin Embedded Tissue:  
Human heart Tissue  
Observed Staining: Cytoplasmic  
Primary Antibody Concentration: 1:100  
Other Working Concentrations: N/A  
Secondary Antibody: Donkey anti-Rabbit-Cy3  
Secondary Antibody Concentration: 1:200  
Magnification: 20X  
Exposure Time: 0.5–2.0 sec