

## Product datasheet for **TA357557**

### LCN1 Rabbit Polyclonal Antibody

#### Product data:

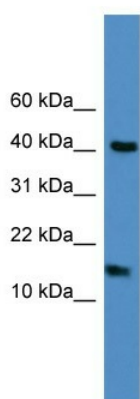
Product Type:	Primary Antibodies
Applications:	WB
Reactivity:	Human
Host:	Rabbit
Clonality:	Polyclonal
Immunogen:	The immunogen is a synthetic peptide directed towards the C terminal region of human LCN1
Specificity:	<b>Expected reactivity:</b> Guinea Pig, Human <b>Homology:</b> Guinea Pig: 92%; Human: 100%
Formulation:	Liquid. Purified antibody supplied in 1x PBS buffer with 0.09% (w/v) sodium azide and 2% sucrose. <i>Note that this product is shipped as lyophilized powder to China customers.</i>
Concentration:	lot specific
Purification:	Affinity Purified
Conjugation:	Unconjugated
Storage:	For short term use, store at 2-8°C up to 1 week. For long term storage, store at -20°C in small aliquots to prevent freeze-thaw cycles.
Stability:	Shelf life: one year from despatch.
Predicted Protein Size:	17kDa
Gene Name:	lipocalin 1
Database Link:	<a href="#">NP_002288</a> <a href="#">Entrez Gene 3933 Human P31025</a>
Background:	LCN1 could play a role in taste reception. LCN1 could be necessary for the concentration and delivery of sapid molecules in the gustatory system. LCN1 can bind various ligands, with chemical structures ranging from lipids and retinoids to the macrocyclic antibiotic rifampicin and even to microbial siderophores. LCN1 exhibits an extremely wide ligand pocket.
Synonyms:	MGC71975; OTTHUMP00000022539; PMFA; Tlc; TP; VEGP



[View online »](#)

Protein Families: Secreted Protein

### Product images:



WB Suggested Anti-LCN1 Antibody Titration: 0.2-1 ug/ml  
ELISA Titer: 1:1562500  
Positive Control: Jurkat cell lysate  
LCN1 is supported by BioGPS gene expression data to be expressed in Jurkat