

## Product datasheet for **TA357556**

### ITIH1 Rabbit Polyclonal Antibody

#### Product data:

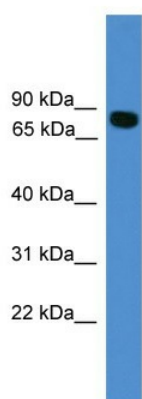
Product Type:	Primary Antibodies
Applications:	WB
Reactivity:	Human
Host:	Rabbit
Clonality:	Polyclonal
Immunogen:	The immunogen is a synthetic peptide directed towards the C terminal region of human ITIH1
Specificity:	<b>Expected reactivity:</b> Cow, Dog, Guinea Pig, Horse, Human, Mouse, Pig, Rabbit, Rat <b>Homology:</b> Cow: 93%; Dog: 100%; Guinea Pig: 86%; Horse: 93%; Human: 100%; Mouse: 92%; Pig: 100%; Rabbit: 86%; Rat: 100%
Formulation:	Liquid. Purified antibody supplied in 1x PBS buffer with 0.09% (w/v) sodium azide and 2% sucrose. <i>Note that this product is shipped as lyophilized powder to China customers.</i>
Concentration:	lot specific
Purification:	Affinity Purified
Conjugation:	Unconjugated
Storage:	For short term use, store at 2-8°C up to 1 week. For long term storage, store at -20°C in small aliquots to prevent freeze-thaw cycles.
Stability:	Shelf life: one year from despatch.
Predicted Protein Size:	86kDa
Gene Name:	inter-alpha-trypsin inhibitor heavy chain 1
Database Link:	<a href="#">NP_001159906</a> <a href="#">Entrez Gene 3697 Human</a> <a href="#">B7Z558</a>
Background:	The protein encoded by this gene is the heavy chain of a serine protease inhibitor that may serve to carry hyaluronan in plasma. This gene is part of a cluster of similar genes on chromosome 3. Multiple transcript variants encoding different isoforms have been found for this gene.
Synonyms:	H1P; IATIH; IGHEP1; ITIH; MGC126415; SHAP



[View online >](#)

Protein Families: Transmembrane

### Product images:



WB Suggested Anti-ITIH1 Antibody Titration: 0.2-1 ug/ml  
ELISA Titer: 1:312500  
Positive Control: HepG2 cell lysate