

## Product datasheet for **TA357555**

### Kininogen 1 (KNG1) Rabbit Polyclonal Antibody

#### Product data:

Product Type:	Primary Antibodies
Applications:	WB
Reactivity:	Human
Host:	Rabbit
Clonality:	Polyclonal
Immunogen:	The immunogen is a synthetic peptide directed towards the N-terminal region of Human KNG1
Specificity:	<b>Expected reactivity:</b> Human, Pig, Rat <b>Homology:</b> Human: 100%; Pig: 79%; Rat: 79%
Formulation:	Liquid. Purified antibody supplied in 1x PBS buffer with 0.09% (w/v) sodium azide and 2% sucrose. <i>Note that this product is shipped as lyophilized powder to China customers.</i>
Concentration:	lot specific
Purification:	Affinity Purified
Conjugation:	Unconjugated
Storage:	For short term use, store at 2-8°C up to 1 week. For long term storage, store at -20°C in small aliquots to prevent freeze-thaw cycles.
Stability:	Shelf life: one year from despatch.
Predicted Protein Size:	43kDa
Gene Name:	kininogen 1
Database Link:	<a href="#">NP_001159923</a> <a href="#">Entrez Gene 3827 Human</a> <a href="#">C9JEX1</a>



[View online »](#)

**Background:**

Kininogens are inhibitors of thiol proteases. HMW-kininogen plays an important role in blood coagulation by helping to position optimally prekallikrein and factor XI next to factor XII and inhibits the thrombin- and plasmin-induced aggregation of thrombocytes. The active peptide bradykinin that is released from HMW-kininogen shows a variety of physiological effects such as influence in smooth muscle contraction, induction of hypotension, natriuresis and diuresis, etc.

**Synonyms:**

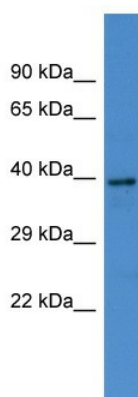
BDK; bradykinin; HMWK; kininogen; KNG

**Protein Families:**

Druggable Genome, Secreted Protein

**Protein Pathways:**

Complement and coagulation cascades

**Product images:**

Host: Rabbit  
Target Name: KNG1  
Sample Type: Placenta lysates  
Antibody Dilution: 1.0ug/ml