

Product datasheet for **TA357552**

Alpha 2 Antiplasmin (SERPINF2) Rabbit Polyclonal Antibody

Product data:

Product Type:	Primary Antibodies
Applications:	IHC, WB
Reactivity:	Human
Host:	Rabbit
Clonality:	Polyclonal
Immunogen:	The immunogen is a synthetic peptide directed towards the N terminal region of human SERPINF2
Specificity:	Expected reactivity: Cow, Horse, Human Homology: Cow: 91%; Horse: 100%; Human: 100%
Formulation:	Liquid. Purified antibody supplied in 1x PBS buffer with 0.09% (w/v) sodium azide and 2% sucrose. <i>Note that this product is shipped as lyophilized powder to China customers.</i>
Concentration:	lot specific
Purification:	Affinity Purified
Conjugation:	Unconjugated
Storage:	For short term use, store at 2-8°C up to 1 week. For long term storage, store at -20°C in small aliquots to prevent freeze-thaw cycles.
Stability:	Shelf life: one year from despatch.
Predicted Protein Size:	54kDa
Gene Name:	serpin family F member 2
Database Link:	NP_000925 Entrez Gene 5345 Human P08697



[View online »](#)

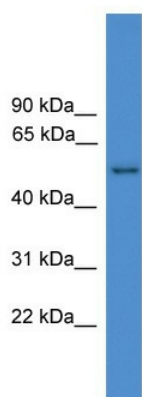
Background: This gene encodes a member of the serpin family of serine protease inhibitors. The protein is a major inhibitor of plasmin, which degrades fibrin and various other proteins. Consequently, the proper function of this gene has a major role in regulating the blood clotting pathway. Mutations in this gene result in alpha-2-plasmin inhibitor deficiency, which is characterized by severe hemorrhagic diathesis. Multiple transcript variants encoding different isoforms have been found for this gene.

Synonyms: A2AP; AAP; alpha-2-antiplasmin; Alpha-2-AP; ALPHA-2-PI; API; OTTHUMP00000115656; PLI

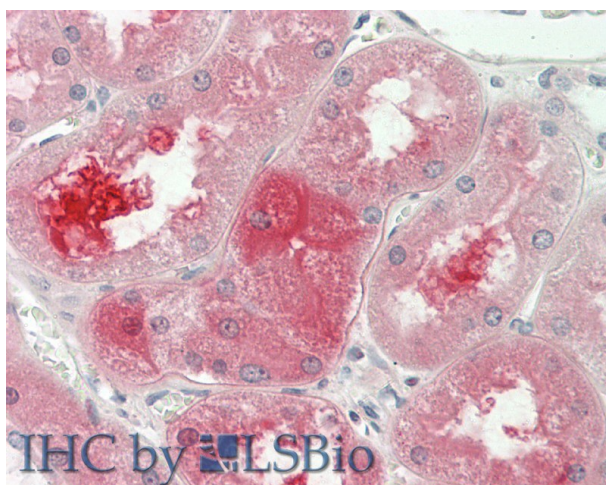
Protein Families: Druggable Genome, Secreted Protein

Protein Pathways: Complement and coagulation cascades

Product images:



WB Suggested Anti-SERPINF2 Antibody Titration:
0.2-1 ug/ml
ELISA Titer: 1:12500
Positive Control: MCF7 cell lysate



Rabbit Anti-SERPINF2 antibody
Catalog Number: ARP59189
Formalin Fixed Paraffin Embedded Tissue:
Human Kidney
Primary antibody Concentration: 1:100
Secondary Antibody: Donkey anti-Rabbit-Cy3
Secondary Antibody Concentration: 1:200
Magnification: 20x
Exposure Time: 0.5-2.0sec