

Product datasheet for **TA357551**

TIMP3 Rabbit Polyclonal Antibody

Product data:

Product Type:	Primary Antibodies
Applications:	IHC, WB
Reactivity:	Human
Host:	Rabbit
Clonality:	Polyclonal
Immunogen:	The immunogen is a synthetic peptide directed towards the middle region of human TIMP3
Specificity:	Expected reactivity: Cow, Dog, Guinea Pig, Horse, Human, Mouse, Rabbit, Rat, Sheep Homology: Cow: 100%; Dog: 100%; Guinea Pig: 100%; Horse: 100%; Human: 100%; Mouse: 100%; Rabbit: 100%; Rat: 100%; Sheep: 100%
Formulation:	Liquid. Purified antibody supplied in 1x PBS buffer with 0.09% (w/v) sodium azide and 2% sucrose. <i>Note that this product is shipped as lyophilized powder to China customers.</i>
Concentration:	lot specific
Purification:	Affinity Purified
Conjugation:	Unconjugated
Storage:	For short term use, store at 2-8°C up to 1 week. For long term storage, store at -20°C in small aliquots to prevent freeze-thaw cycles.
Stability:	Shelf life: one year from despatch.
Predicted Protein Size:	22kDa
Gene Name:	TIMP metalloproteinase inhibitor 3
Database Link:	NP_000353 Entrez Gene 7078 Human P48032



[View online »](#)

Background:

This gene belongs to the TIMP gene family. The proteins encoded by this gene family are inhibitors of the matrix metalloproteinases, a group of peptidases involved in degradation of the extracellular matrix (ECM). Expression of this gene is induced in response to mitogenic stimulation and this netrin domain-containing protein is localized to the ECM. Mutations in this gene have been associated with the autosomal dominant disorder Sorsby's fundus dystrophy.

Synonyms:

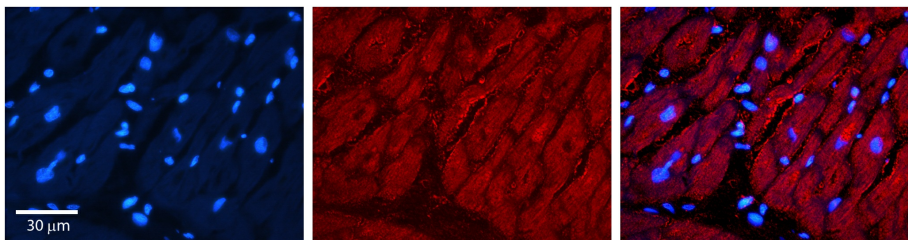
HSMRK222; K222; K222TA2; SFD; TIMP-3

Protein Families:

Druggable Genome, Secreted Protein

Product images:


WB Suggested Anti-TIMP3 Antibody Titration: 0.2-1 ug/ml
 ELISA Titer: 1:1562500
 Positive Control: MCF7 cell lysate



Rabbit Anti-TIMP3 Antibody
 Catalog Number: TA357551
 Formalin Fixed Paraffin Embedded Tissue:
 Human heart Tissue
 Observed Staining: Cytoplasmic in secretions between cells
 Primary Antibody Concentration: 1:100
 Other Working Concentrations: N/A
 Secondary Antibody: Donkey anti-Rabbit-Cy3
 Secondary Antibody Concentration: 1:200
 Magnification: 20X
 Exposure Time: 0.5–2.0 sec