

## Product datasheet for **TA357547**

### SERPINB12 Rabbit Polyclonal Antibody

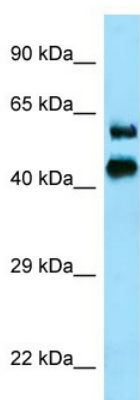
#### Product data:

Product Type:	Primary Antibodies
Applications:	WB
Reactivity:	Human
Host:	Rabbit
Clonality:	Polyclonal
Specificity:	<b>Expected reactivity:</b> Cow, Dog, Guinea Pig, Horse, Human <b>Homology:</b> Cow: 79%; Dog: 100%; Guinea Pig: 100%; Horse: 100%; Human: 100%
Formulation:	Liquid. Purified antibody supplied in 1x PBS buffer with 0.09% (w/v) sodium azide and 2% sucrose. <i>Note that this product is shipped as lyophilized powder to China customers.</i>
Concentration:	lot specific
Purification:	Affinity Purified
Conjugation:	Unconjugated
Storage:	For short term use, store at 2-8°C up to 1 week. For long term storage, store at -20°C in small aliquots to prevent freeze-thaw cycles.
Stability:	Shelf life: one year from despatch.
Predicted Protein Size:	46kDa
Gene Name:	serpin family B member 12
Database Link:	<a href="#">NP_536722</a> <a href="#">Entrez Gene 89777 Human</a> <a href="#">Q96P63</a>
Background:	The function of this protein remains unknown.
Synonyms:	MGC119247; MGC119248; YUKOPIN
Protein Families:	Druggable Genome



[View online »](#)

Product images:



Host: Rabbit  
Target Name: SERPINB12  
Antibody Dilution: 1.0ug/ml  
Sample Type: Human Small Intestine