

Product datasheet for **TA357546**

SERPINB9 Rabbit Polyclonal Antibody

Product data:

Product Type:	Primary Antibodies
Applications:	WB
Reactivity:	Human
Host:	Rabbit
Clonality:	Polyclonal
Immunogen:	The immunogen is a synthetic peptide directed towards the C terminal region of human SPB9
Specificity:	Expected reactivity: Human Homology: Cow: 75%; Dog: 75%; Guinea Pig: 92%; Horse: 85%; Human: 100%; Mouse: 100%; Rabbit: 86%; Rat: 100%
Formulation:	Liquid. Purified antibody supplied in 1x PBS buffer with 0.09% (w/v) sodium azide and 2% sucrose. <i>Note that this product is shipped as lyophilized powder to China customers.</i>
Concentration:	lot specific
Purification:	Affinity purified
Conjugation:	Unconjugated
Storage:	For short term use, store at 2-8°C up to 1 week. For long term storage, store at -20°C in small aliquots to prevent freeze-thaw cycles.
Stability:	Shelf life: one year from despatch.
Predicted Protein Size:	41 kDa
Gene Name:	serpin family B member 9
Database Link:	NP_004146 Entrez Gene 5272 Human P50453
Background:	This gene encodes a member of the serine protease inhibitor family which are also known as serpins. The encoded protein belongs to a subfamily of intracellular serpins. This protein inhibits the activity of the effector molecule granzyme B. Overexpression of this protein may prevent cytotoxic T-lymphocytes from eliminating certain tumor cells. A pseudogene of this gene is found on chromosome 6.

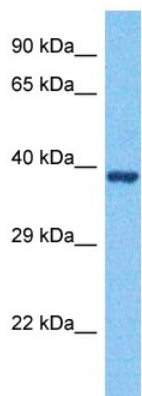


[View online »](#)

Synonyms: CAP-3; CAP3; PI9

Protein Families: Druggable Genome

Product images:



Host: Rabbit
Target Name: SPB9
Sample Type: Lymph Node Tumor Lysate
Antibody Dilution: 1.0 μ g/ml

Host: Rabbit
Target Name: SPB9
Sample Tissue: Lymph Node Tumor lysates
Antibody Dilution: 1.0 μ g/ml