

Product datasheet for **TA357540**

Alpha 1 microglobulin (AMBP) Rabbit Polyclonal Antibody

Product data:

Product Type:	Primary Antibodies
Applications:	WB
Reactivity:	Human
Host:	Rabbit
Clonality:	Polyclonal
Immunogen:	The immunogen is a synthetic peptide directed towards the N terminal region of human AMBP
Specificity:	Expected reactivity: Cow, Guinea Pig, Horse, Human, Pig, Rabbit, Rat Homology: Cow: 83%; Guinea Pig: 85%; Horse: 79%; Human: 100%; Pig: 92%; Rabbit: 93%; Rat: 79%
Formulation:	Liquid. Purified antibody supplied in 1x PBS buffer with 0.09% (w/v) sodium azide and 2% sucrose. <i>Note that this product is shipped as lyophilized powder to China customers.</i>
Concentration:	lot specific
Purification:	Affinity Purified
Conjugation:	Unconjugated
Storage:	For short term use, store at 2-8°C up to 1 week. For long term storage, store at -20°C in small aliquots to prevent freeze-thaw cycles.
Stability:	Shelf life: one year from despatch.
Predicted Protein Size:	39kDa
Gene Name:	alpha-1-microglobulin/bikunin precursor
Database Link:	NP_001624 Entrez Gene 259 Human P02760



[View online »](#)

Background:

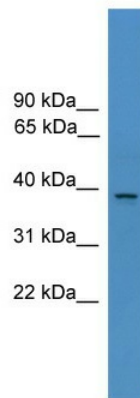
This gene encodes a complex glycoprotein secreted in plasma. The precursor is proteolytically processed into distinct functioning proteins: alpha-1-microglobulin, which belongs to the superfamily of lipocalin transport proteins and may play a role in the regulation of inflammatory processes, and bikunin, which is a urinary trypsin inhibitor belonging to the superfamily of Kunitz-type protease inhibitors and plays an important role in many physiological and pathological processes. This gene is located on chromosome 9 in a cluster of lipocalin genes.

Synonyms:

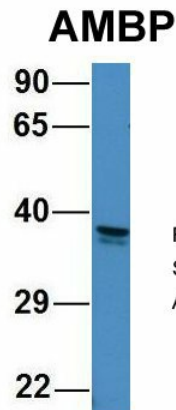
A1M; alpha-1-microglobulin/bikunin; bikunin; EDC1; HCP; HI30; IATIL; ITI; ITIL; ITILC; trypstatin; uristatin; UTI

Protein Families:

Secreted Protein

Product images:


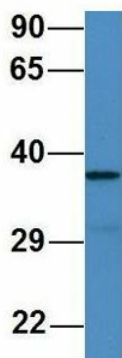
WB Suggested Anti-AMBP Antibody Titration: 0.2-1 ug/ml
 ELISA Titer: 1:312500
 Positive Control: Hela cell lysate



Rabbit Anti-AMBP
 Sample Type: Human HepG2
 Antibody Concentration: 1ug/mL

Host: Rabbit
 Target Name: AMBP
 Sample Type: Human HepG2
 Antibody Dilution: 1.0ug/ml AMBP is supported by BioGPS gene expression data to be expressed in HepG2

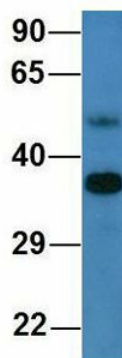
AMBP



Rabbit Anti-AMBP
Sample Type: Human 721_B
Antibody Concentration: 1ug/mL

Host: Rabbit
Target Name: AMBP
Sample Type: Human 721_B
Antibody Dilution: 1.0ug/ml AMBP is supported by BioGPS gene expression data to be expressed in 721_B

AMBP



Rabbit Anti-AMBP
Sample Type: Human Adult Placenta
Antibody Concentration: 1ug/mL

Host: Rabbit
Target Name: AMBP
Sample Type: Human Adult Placenta
Antibody Dilution: 1.0ug/ml