

Product datasheet for **TA357539**

SPINT2 Rabbit Polyclonal Antibody

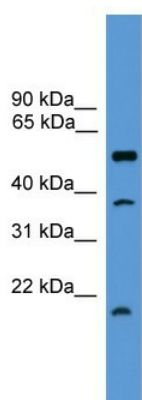
Product data:

Product Type:	Primary Antibodies
Applications:	WB
Reactivity:	Human
Host:	Rabbit
Clonality:	Polyclonal
Immunogen:	The immunogen is a synthetic peptide directed towards the middle region of human SPINT2
Specificity:	Expected reactivity: Cow, Dog, Guinea Pig, Horse, Human, Mouse, Rabbit, Rat Homology: Cow: 86%; Dog: 86%; Guinea Pig: 100%; Horse: 86%; Human: 100%; Mouse: 86%; Rabbit: 86%; Rat: 93%
Formulation:	Liquid. Purified antibody supplied in 1x PBS buffer with 0.09% (w/v) sodium azide and 2% sucrose. <i>Note that this product is shipped as lyophilized powder to China customers.</i>
Concentration:	lot specific
Purification:	Affinity Purified
Conjugation:	Unconjugated
Storage:	For short term use, store at 2-8°C up to 1 week. For long term storage, store at -20°C in small aliquots to prevent freeze-thaw cycles.
Stability:	Shelf life: one year from despatch.
Predicted Protein Size:	19kDa
Gene Name:	serine peptidase inhibitor, Kunitz type, 2
Database Link:	NP_001159575 Entrez Gene 10653 Human B4DLU1
Background:	HAI-2 (SPINT2) is a candidate tumour suppressor gene that is frequently hypermethylated and underexpressed in human HCCs, and the KD-1 domain of HAI-2 is the key region responsible for its anti-invasive function. It is also implicated in human cervical cancer.
Synonyms:	DIAR3; FLJ45571; HAI-2; HAI2; Kop; PB
Protein Families:	Transmembrane



[View online »](#)

Product images:



WB Suggested Anti-SPINT2 Antibody Titration:
0.2-1 $\mu\text{g/ml}$
ELISA Titer: 1:1562500
Positive Control: THP-1 cell lysate