

Product datasheet for **TA357538**

TGF beta 3 (TGFB3) Rabbit Polyclonal Antibody

Product data:

Product Type:	Primary Antibodies
Applications:	IHC, WB
Reactivity:	Human
Host:	Rabbit
Clonality:	Polyclonal
Immunogen:	The immunogen is a synthetic peptide directed towards the middle region of human TGFB3
Specificity:	Expected reactivity: Cow, Dog, Guinea Pig, Horse, Human, Mouse, Rabbit, Rat, Sheep Homology: Cow: 85%; Dog: 100%; Guinea Pig: 93%; Horse: 100%; Human: 100%; Mouse: 93%; Rabbit: 100%; Rat: 93%; Sheep: 85%
Formulation:	Liquid. Purified antibody supplied in 1x PBS buffer with 0.09% (w/v) sodium azide and 2% sucrose. <i>Note that this product is shipped as lyophilized powder to China customers.</i>
Concentration:	lot specific
Purification:	Affinity Purified
Conjugation:	Unconjugated
Storage:	For short term use, store at 2-8°C up to 1 week. For long term storage, store at -20°C in small aliquots to prevent freeze-thaw cycles.
Stability:	Shelf life: one year from despatch.
Predicted Protein Size:	47kDa
Gene Name:	transforming growth factor beta 3
Database Link:	NP_003230 Entrez Gene 7043 Human P10600
Background:	TGFB3 is involved in embryogenesis and cell differentiation.
Synonyms:	ARVD; FLJ16571; TGF-beta-3; TGF-beta3
Protein Families:	Druggable Genome, Secreted Protein, Transmembrane



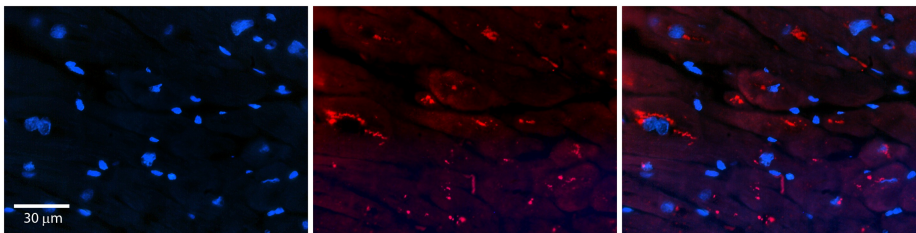
[View online »](#)

Protein Pathways:

Cell cycle, Chronic myeloid leukemia, Colorectal cancer, Cytokine-cytokine receptor interaction, Dilated cardiomyopathy, Hypertrophic cardiomyopathy (HCM), MAPK signaling pathway, Pancreatic cancer, Pathways in cancer, Renal cell carcinoma, TGF-beta signaling pathway

Product images:


WB Suggested Anti-TGFB3 Antibody Titration: 0.2-1 ug/ml
 ELISA Titer: 1:312500
 Positive Control: Jurkat cell lysate



Rabbit Anti-TGFB3 Antibody
 Catalog Number: TA357538
 Formalin Fixed Paraffin Embedded Tissue:
 Human Heart Tissue
 Observed Staining: Cytoplasm in cardiomyocytes
 Primary Antibody Concentration: 1:100
 Other Working Concentrations: N/A
 Secondary Antibody: Donkey anti-Rabbit-Cy3
 Secondary Antibody Concentration: 1:200
 Magnification: 20X
 Exposure Time: 0.5–2.0 sec