

## Product datasheet for **TA357532**

### LAX1 Rabbit Polyclonal Antibody

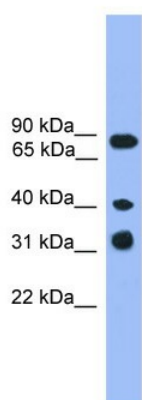
#### Product data:

Product Type:	Primary Antibodies
Applications:	WB
Reactivity:	Human
Host:	Rabbit
Clonality:	Polyclonal
Immunogen:	The immunogen is a synthetic peptide directed towards the C terminal region of human LAX1
Specificity:	<b>Expected reactivity:</b> Dog, Human, Mouse, Pig, Rat <b>Homology:</b> Dog: 86%; Human: 100%; Mouse: 79%; Pig: 79%; Rat: 79%
Formulation:	Liquid. Purified antibody supplied in 1x PBS buffer with 0.09% (w/v) sodium azide and 2% sucrose.
Concentration:	lot specific
Purification:	Affinity Purified
Conjugation:	Unconjugated
Storage:	For short term use, store at 2-8°C up to 1 week. For long term storage, store at -20°C in small aliquots to prevent freeze-thaw cycles.
Stability:	Shelf life: one year from despatch.
Predicted Protein Size:	42kDa
Gene Name:	lymphocyte transmembrane adaptor 1
Database Link:	<a href="#">NP_001129662</a> <a href="#">Entrez Gene 54900 Human</a> <a href="#">B7Z744</a>
Background:	LAX1 is a single-pass type III membrane protein. It negatively regulates TCR (T-cell antigen receptor)-mediated signaling in T-cells and BCR (B-cell antigen receptor)-mediated signaling in B-cells.
Synonyms:	FLJ20340; LAX
Protein Families:	Transmembrane



[View online »](#)

## Product images:



WB Suggested Anti-LAX1 Antibody Titration: 0.2-1 ug/ml  
ELISA Titer: 1:312500  
Positive Control: Jurkat cell lysate LAX1 is supported by BioGPS gene expression data to be expressed in Jurkat