

Product datasheet for TA357527

Cd247 Rabbit Polyclonal Antibody

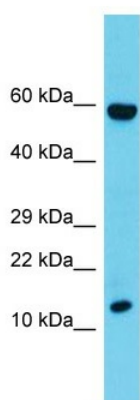
Product data:

Product Type:	Primary Antibodies
Applications:	WB
Reactivity:	Rat
Host:	Rabbit
Clonality:	Polyclonal
Immunogen:	The immunogen is a synthetic peptide directed towards the C-terminal region of Rat Cd247
Specificity:	Expected reactivity: Cow, Dog, Horse, Human, Mouse, Pig, Rabbit, Rat Homology: Cow: 75%; Dog: 92%; Horse: 80%; Human: 100%; Mouse: 100%; Pig: 100%; Rabbit: 88%; Rat: 100%
Formulation:	Liquid. Purified antibody supplied in 1x PBS buffer with 0.09% (w/v) sodium azide and 2% sucrose. <i>Note that this product is shipped as lyophilized powder to China customers.</i>
Concentration:	lot specific
Purification:	Affinity Purified
Conjugation:	Unconjugated
Storage:	For short term use, store at 2-8°C up to 1 week. For long term storage, store at -20°C in small aliquots to prevent freeze-thaw cycles.
Stability:	Shelf life: one year from despatch.
Predicted Protein Size:	15kDa
Gene Name:	Cd247 molecule
Database Link:	NP_001192233 Entrez Gene 25300 Rat
Background:	Cd247 is a component of T cell receptor (TCR) complex that plays a role in TCR assembly and signaling; It does not promote surface expression of Fc gamma RIII, unlike human homolog.
Synonyms:	CD3-ZETA; CD3H; CD3Q; CD3Z; T3Z; TCRZ



[View online »](#)

Product images:



Host: Rabbit
Target Name: Cd247
Sample Type: Rat Thymus lysates
Antibody Dilution: 1.0ug/ml